



FLORIDA COUNCIL
of
BROMELIAD SOCIETIES inc.

1987

Newsletter

This newsletter published by Florida Council of Bromeliad Societies, Inc. & mailed to all paid up members of those Bromeliad Societies of Florida which make up the Council. Non-members may subscribe for \$2.00 yr. Make checks payable to: Florida Council of Bromeliad Societies & mail to Carol Johnson, Editor at the cover address.

VOLUME VII - ISSUE I

FEBRUARY 1987

AROUND FLORIDA

BROMELIAD GUILD OF TAMPA BAY. 1986 Distinguished Service Award was presented to Tom & Carol Wolfe. Tom is also the new president of the Tampa Guild. Also, the memberships voted honorary life memberships to Ervin & Velva Wirthmann and Art & Marystel VanHuyning.

Those of you who visited at her home and enjoyed her personal collection, will be sad to hear that Mary Wisdom died recently in New Orleans. She was a devoted plant collector and a prominent figure at all the World Conference Plant Auctions. I believe Herb Hill named a plant for her.

The Florida State Bromeliad Show to be held in Ft. Myers in November will be dedicated to the memory of Victoria Padilla, the first lady of bromeliads, who passed away in Los Angeles in late 1986.

Caloosahatchee Bromeliad Society reports they cleared about \$1,200.00 at their November bromeliad sale. The money will be used for advance expenses of the Florida State Bromeliad Show which they will host in November 1987.

SPEAKER'S BUREAU. Program Chairmen throughout the state report a real shortage of speakers for their meetings. FCBS in 1986 sent out invitations to 75 people to sign up as speakers. We received eight volunteers and, you guessed it, from the same people who have been hauling the wagon lo these many years.

The next issue of the Newsletter will feature an article about Ed Hummel, the California hybridizer, some of whose hybrids are in nearly every bromeliad collection in Florida. Research on Mr. Hummel has been slow, especially as regards his personal statistics. It was therefore impossible to finish the article in time for this issue.

CONTEST. Can you do line drawings? If so, draw for me, using 25 lines or less, any bromeliad of your choice. I will reproduce it, with credit, in the Newsletter. Then, an award will be presented for the winning drawing at the Florida State Bromeliad Show in Ft. Myers in November.

If you plan to use Florel to induce blooming for a show, remember that you should allow at least 70 days from treatment to bloom. Some, such as *Aechmea fendleri*, take a good bit longer.

EDITOR'S NOTE: At the October 1986 meeting of the Florida Council it was voted to forgo publication of the fourth issue of the Newsletter. There were no upcoming shows in the state and everything sort of buttons down for the Christmas season and the cold weather. The Council may elect to do the same with the last issue in 1987, but that will be decided at the October 1987 meeting of the Council. Printing costs keep rising and there is no way to cut back any further than we already have. The total cost of the three issues published in 1986 was \$874.12.

So far (knock wood) there has been little, if any, frost in the state. However, if your plants are under cover, the extremely warm weather poses another sort of problem. During the day, greenhouse temperatures may rise to 100 degrees. The plants dry out, and are then prey to scale infestation. Before you uncover (late February or March) do a thorough spray job. Pay special attention to the areas under the benches. It is a good idea to repeat spray about 10 days later, using a more dilute mix. Those spent plants that are under the benches, pupping, are the most susceptible to the propagation of scale.

TYLENCHOCRICONEMA ALLENI, A PATHOGEN OF THE
BROMELIAD, TILLANDSIA FLABELLATA

P. S. Lehman

In 1974, an unusual nematode species was recovered from soil about the roots of a bromeliad shipped from Guatemala to California. This nematode was described as a new species and named Tylenchocriconema alleni Raski and Siddiqui (2). The genus and species of the bromeliad associated with the soil from which the type species was recovered was not determined. Nor was it known if T. alleni parasitized the roots or foliage of bromeliads or any other plant. The biology of this nematode remained unknown until 1984, when a nematologist in The Netherlands observed T. alleni parasitizing the leaves of Tillandsia flabellata Bak. (1). It is interesting to note that the bromeliad on which this nematode was found in The Netherlands had also been shipped from Guatemala. Recent research in The Netherlands indicates that this nematode has the potential to be very pathogenic to Tillandsia flabellata (1).

Key characteristics of Tylenchocriconema alleni: Females have an enlarged metacarpus which merges with the procorpus, and males have a degenerate esophagus. These are characteristics of the superfamily Criconematoidea. This nematode, however, shares other characteristics with the superfamily Tylenchoidea, such as long caudal alae in males, elongate isthmus in females, and fine body annulation in males and females (Fig. 1). Because T. alleni shares characteristics with both superfamilies, Raski and Siddiqui gave it the generic name Tylenchocriconema and placed it in a new family and superfamily, Tylenchocriconematidae and Tylenchocriconematoidea, respectively.

Parasitic behavior: Nematodes do not penetrate the leaf, but feed by only piercing the leaf cells with their stylets. The largest number of Tylenchocriconema alleni are found in the crown of the plant, just below the waterline. As many as 35,000 nematodes have been recovered from an infected plant (1).

Symptoms: Healthy plants begin to show light brown spots on the top leaf surface six weeks after inoculation with this nematode. Later these spots become discrete, dark brown lesions. As the infection progresses, flowering is inhibited, and severely infected leaves die. Severely infected plants may die.

Control: When the leaves die, clusters of nematodes and eggs remain on the dried leaves. These clusters appear to the naked eye as a wool-like mass. It is possible that nematodes may be dispersed on dead leaf material (1). Dead leaves of infected plants should be discarded.

Preliminary research indicates that this nematode may be controlled with oxyxyl (1). Concentrations of 0.005% a.i. apparently gave complete control, and a higher concentration of 0.025% a.i. was not phytotoxic (personal communication Dr. P. W. Maas, Wageningen, The Netherlands).

Survey and Detection: Bromeliads originating from Central America should be inspected very carefully for this nematode, although the possibility of its originating from European countries or from other parts of the United States should not be precluded. The author is interested in surveying Tillandsia flabellata and other bromeliads in Florida for Tylenchocriconema alleni. Submit bromeliads with leaf lesions to the Division of Plant Industry Nematology Bureau, and indicate that the purpose of the submission is for the T. alleni survey.

LITERATURE CITED:

1. Brinkman, H. 1985. Tylenchocriconema alleni een bijzonder aaltje in de bladkoker Tillandsia flabellata, p. 79-80. In Jaarboek 1984, Plantenziektenkundige Dienst, Wageningen, The Netherlands.
2. Raski, D. J., and I. A. Siddiqui. 1975. Tylenchocriconema alleni n.g. n.sp. from Guatemala (Tylenchocriconematidae n. fam.: Tylenchocriconematoidea n. superfam.; Nematoda. J. Nematol. 7:247-251.

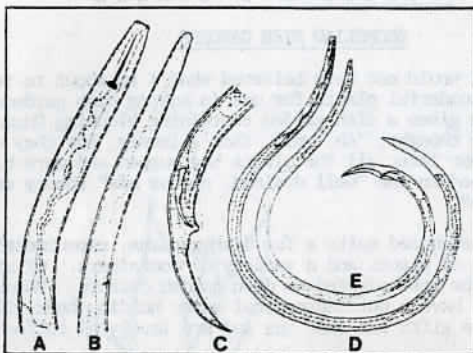


Fig. 1. Tylenchocriconema alleni. A. female, anterior end. B. Male anterior end. C. male tail. D. Female, full length. E. Male, full length (after Raski and Siddiqui)

JUDGING SCHOOL PLANNED

The Bromeliad Guild of Tampa Bay plans to sponsor a judging school to train new bromeliad judges. The course will consist of five training sessions and a final exam. Graduates will receive certificates as International Accredited Bromeliad Judges from the Bromeliad Society, Inc. Size of the enrollment will determine the cost of each session, but should not exceed \$25.00, or \$150.00 for the entire course.

September 12, 1987 as been tentatively set for the date of the first session. The classes will be taught by Ms. Valerie Steckler of Austin, Texas, who conducted the first judging school in Florida. Location of the school has not been determined, pending final enrollment, as it is planned to pick a location most central and convenient to the students.

Judges who have satisfactorily renewed their certificates are invited to apply to be student instructors during this course. Those interested in participating in the school, either as student judges or student instructors, are urged to write as soon as possible to: Mr. Roland Schnabel; 5106 127th Ave.; Tampa, Fl. 33617; Telephone 813-988-7046.



The latest from Murray Cragin of Northwest Florida Bromeliad Society:

"Eating a frog before breakfast tends to ruin the whole day for the both of you".

BROMELIAD DISH GARDENS

Five years ago I would not have believed what I am about to tell you--- that Bromeliads are wonderful plants for use in making dish gardens. When I was in the hospital I was given a dish garden containing blooming *Guzmania* and *Tillandsia flabellata*. I thought, "Ah, well, that's lovely, but they will bloom and then rot away". A year later all the plants had pupped and were blooming again. Amazing! What happened to the "well drained, porous mix" theory espoused by all the bromeliad experts?

I have since constructed quite a few dish gardens, experimenting with various species, combinations of plants and a variety of containers. Of all the bromeliads, the *Cryptanthus* are the best adapted to dish garden culture. However, any of the plants which does not have a defined central water holding tank will do well. The dish gardens make nice gifts for shut-ins and are lovely as coffee table decorations.

The dish need not be large or fancy. There should be no drainage holes in the base, but it should be deep enough for a layer of pebbles or rocks on the bottom, plus enough space for sufficient soil to support the plants. Select small plants, especially when using *Cryptanthus*. It will take awhile, but the plants will fill the container nicely.

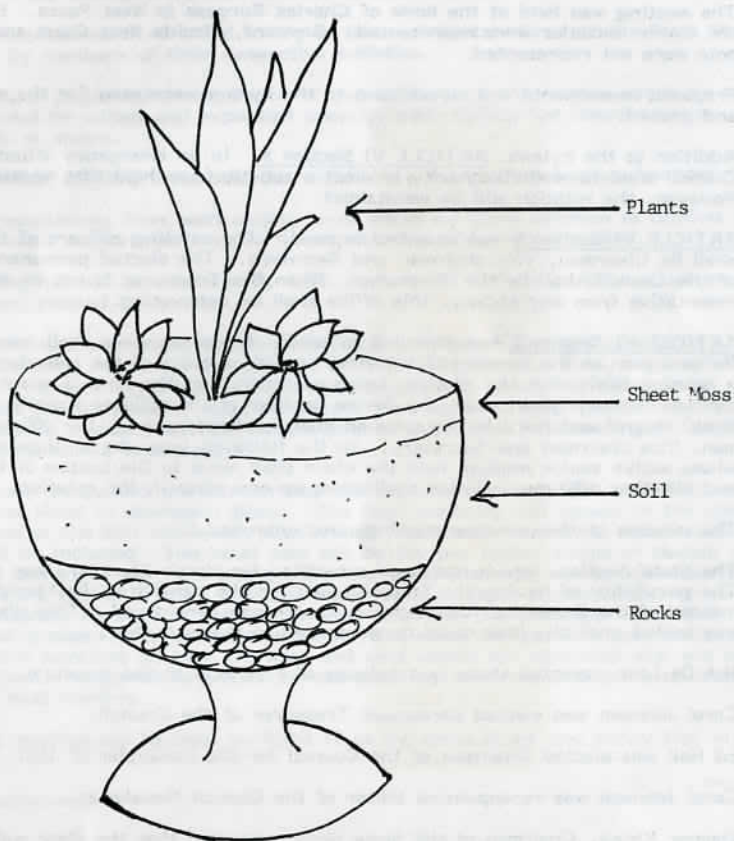
The accompanying illustration shows the typical construction of a dish garden. First, on the bottom, place a layer of rock, then pack soil on top of the rock layer and wet down. Insert the plants into the soil and pack in firmly. A top dressing of sheet moss gives a nice, finished appearance but is really not essential to the success of the garden. When the plants show signs of making growth, give them a light dressing of fertilizer, either slow release or liquid. Never let the dish garden dry out. Mine seem to do the best if allowed to overflow occasionally. If you are worried about algae or odor, use some ground charcoal in the mix. However, I cannot see any difference between the ones that contain charcoal and those which do not.

A consideration in selecting plants for dish gardens is their low light tolerance. Chances are the garden will end up indoors away from strong light, so pick plants which will not mind. However, don't hesitate to experiment. Common sense will tell you that an *Aechmea bracteata* would be a poor selection for a small dish garden.

Following is a list of suggested plants for use in dish gardens:

Cryptanthus (short leaved rosette types, also *C. beukeri*).
Guzmania (any of the minors or medias)
Areococcus flagelifolius
Vrieseas (*V. bleheri*, *ospinae*, *racinae*, *sucrei*, *rodigasiana*, *vagans*, *splendens*)
Nidularium (any of the *Nid. billbergioides*, *Nid. microps*, *Nid. scheremetevii*)
Orthophytum (nearly all species)
Catopsis
Dyckia (small species)
Tillandsia (*T. cyanea*, *flabellata*, *lieboidiana*, any form which will tolerate soil culture).

The versatility of the Bromeliaceae is truly amazing.



BROMELIAD DISH GARDEN

FLORIDA COUNCIL OF BROMELIAD SOCIETIES
MINUTES OF THE JANUARY 10, 1987 MEETING

The meeting was held at the home of Charles Burgess in West Pasco. Eight of the eleven societies were represented. Broward, Florida West Coast and Sarasota were not represented.

Proposed amendments and an addition to the bylaws were read for the second time and passed.

Addition to the bylaws. ARTICLE VI Section 5. In an emergency situation the Council shall have the authority to elect a substitute to hold that vacated office. However, the rotation will be maintained.

ARTICLE VI Section 1 was amended to read: The rotating officers of the Council shall be Chairman, Vice chairman and Secretary. The elected permanent officer of the Council shall be the Treasurer. When the Treasurer is not an elected representative from any society, this office shall be non-voting.

ARTICLE VI Section 2 was amended to read: Senior members shall assume office for one year at the opening of the first regular meeting of the calendar year on a rotating basis with the rotation being established at the time of adoption of these bylaws. In any given year, the Senior member of the affiliate societies that are first, second and third in the rotation shall hold respectively the offices of Chairman, Vice chairman and Secretary. In the following year the affiliate society whose active senior member held the chair shall move to the bottom of the rotation and all other affiliate societies shall move up one place in the rotation.

The minutes of the previous meeting were approved.

The State Auction, which had been scheduled for March 22, 1987, was cancelled. The possibility of having the State Auction for the benefit of the Florida Council instead of the Bromeliad Identification Center was considered. This discussion was tabled until the idea could be presented to Harry Luther.

Nat De Leon reported there is a balance of \$1,029.10 in the treasury.

Carol Johnson was elected permanent Treasurer of the Council.

Ed Hall was elected Chairman of the Council for the remainder of 1987.

Carol Johnson was re-appointed Editor of the Council Newsletter.

Eleanor Kinzie, Chairman of the State Show, reported that the show will be dedicated to the memory of Victoria Padilla. Metro Mall in Fort Myers is being considered as the site for the show on November 7 and 8, 1987. In order to earn more money for the Council, there will be member plant sales only, no commercial sales. Any commercial people who are members of the Caloosahatchee society will be allowed to sell in the member plant sale area. A tent will be set up to accommodate the sale. The possibility of having seminars is being considered. A theme for the show will be announced at the March Council meeting. The Metro Mall does not have enough space for society displays.

Carolyn Schoenau will obtain a plaque to be presented to Tinker Musleh, chairman for 1986.

Carol Johnson suggested that the Council make every effort to eliminate the \$25 assessment to societies, that money be earned by some other means to make membership in the Council more equitable for smaller societies.

The representatives were asked to try to learn what attendance at the State Show might be by members of their respective societies.

Bob Newbaur presented a compilation of general cultural information which he recommended be edited and expanded upon by each society for distribution to the public at shows.

Carol Johnson will bill those societies which have not paid their dues for 1986.

The representatives from each society were asked by Carol Johnson to confirm the names of their current members on a computer list which she supplied.

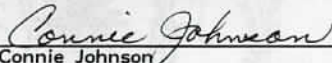
The mailing list will be available for sale, to be used for the purpose of advertising plant related items only.

Roland Schnabel announced the Bromeliad Guild of Tampa Bay will sponsor a judging School. Anyone in Florida will be allowed to attend. Cost, time and location will be determined later. An announcement will be sent to all societies when plans are completed. Representatives were asked to poll the members of their societies to determine how many would be interested in attending. Tampa will back the school financially.

Nat De Leon announced the site for the 1988 World Conference will be the Inter-Continental Hotel in downtown Miami. The first publicity will appear in the March-April issue of the BSI JOURNAL. Conference registration and hotel reservation forms will be included. The hotel rate will be \$80 per night, single or double occupancy, children free. Collecting trips are being planned, one to Guatemala and one, possibly two to Brazil. Societies were asked to make a commitment for putting in displays as soon as possible so that space may be allocated. Fees for commercial growers have been established. Nat asked for possible post-conference garden tour locations on both the east and west coasts for attendees who will be driving home. Suggestions should be submitted by each representative no later than the next meeting.

The next meeting will be held on April 11 at the home of Ed and Nancy Hall in Maitland.

Meeting adjourned.


Connie Johnson
Secretary

SHOW PAGE

- 2/27-28, 3/1/87 Bromeliad Sale at University Square Mall, Tampa.
Bromeliad Guild of Tampa Bay
- 3/27-29/87 Palatka Mall Bromeliad Show. Co-hosted by Jacksonville
& Seminole Bromeliad Societies. Judged Show & Plant Sale.
Mall hours apply. Contact Ron or Carolyn Schoenau;
904-372-6589
- 5/2-3/87 Bromeliad Society of Broward County competitive show.
Diecke Auditorium, Plantation, Fl. Hours, Saturday
10 a.m. to 5 p.m.; Sunday 10 a.m. to 4 p.m. Contact
Maureen Frazel, 305-474-1349.
- 5/8-10/87 Ninth Annual Bromeliad Show & Sale; Westshore Mall; Tampa.
Judged show & sale of bromeliads. Mall hours apply.
Contact Tom Wolfe, BGTB President, 813-961-1475.
- 5/16-17/87 Tenth Annual South Florida Bromeliad Show; Fairchild
Gardens; Miami. Judged show & plant sales. Contact
Dean Fairchild, Show Steering Chairman; 305-235-4104.
- 11/7-8/87 FLORIDA STATE BROMELIAD SHOW. Fort Myers, Fl.
Tentative location, Metro Mall in Ft. Myers.
For information: Eleanor Kinzie, 813-332-0210
- 5/19-22/88 WORLD BROMELIAD CONFERENCE, Intercontinental Hotel,
Miami. Nat DeLeon & Connie Johnson, Chairmen.
Check your March/April "Journal" for registration
forms and information. A list of the committee
chairmen will be included in the next "Newsletter"
and a separate page will be devoted to the World
Conference in every issue printed between now and
May, 1988.

