



THE CALOOSAHATCHEE BROMELIAD SOCIETY'S CALOOSAHATCHEE MERISTEM

Mar–Apr 2011



CALOOSAHATCHEE BROMELIAD SOCIETY OFFICERS

EXECUTIVE COMMITTEE

PRESIDENT—Vicky Chirnside [-\(vickychir@aol.com\)](mailto:vickychir@aol.com)

VICE-PRESIDENT—Marsha Crawford marshacrawford@embarqmail.com

SECRETARY—MaryLynn Murphy MaryLynn100@me.com

TREASURER—Betty Ann Prevatt bprevattpcc@aol.com

PAST-PRESIDENT—Eleanor Kinzie bprevattpcc@aol.com

STANDING COMMITTEES CHAIRPERSONS

NEWSLETTER EDITOR—Larry Giroux 997-2237 DrLarry@comcast.net

FALL SALES CHAIRS—Geri & Dave Prall PalmTreeGardens@hotmail.com;

Brian Weber brianweber1b@aol.com

PROGRAM CHAIRPERSON—Bruce McAlpin

WORKSHOP CHAIRPERSON—Catherine Petersen cpeters3606@yahoo.com

SPECIAL PROJECTS—Gail Daneman bob@fesq.net

CBS FCBS Rep.—Vicky Chirnside vickychir@aol.com

CBS FCBS Rep.—Position available

OTHER COMMITTEES

AUDIO/VISUAL SETUP—Bob Lura, Terri Lazar, Vicky Chirnside

DOOR PRIZE—Terri Lazar terriLML@earthlink.net

HOSPITALITY—Mary McKenzie , Sue Gordon

SPECIAL HOSPITALITY—Betsy Burdette betsy@burdetteinc.com

RAFFLE TICKETS—Greeter/Membership table volunteers—Dolly Dalton, Luli Westra

RAFFLE COMMENTARY—Larry Giroux

GREETERS/ATTENDANCE—Betty Ann Prevatt; Dolly Dalton dollyd@comcast.net), Luli Westra

SHOW & TELL—Dale Kammerlohr dzdase@embarqmail.com

FM-LEE GARDEN COUNCIL—Mary McKenzie

LIBRARIAN—Kay Janssen

The opinions expressed in the Meristem are those of the authors. They do not necessarily represent the views of the Editor or the official policy of CBS. Permission to reprint is granted with acknowledgement. Original art work remains the property of the artist and special permission may be needed for reproduction.



THE CALOOSAHATCHEE BROMELIAD SOCIETY

March Auction is at the ST. JOHN the APOSTLE CHURCH 3049 MCGREGOR Ave. FT. MYERS. DOORS WILL BE OPEN AT 12:15 PM FOR SETUP.

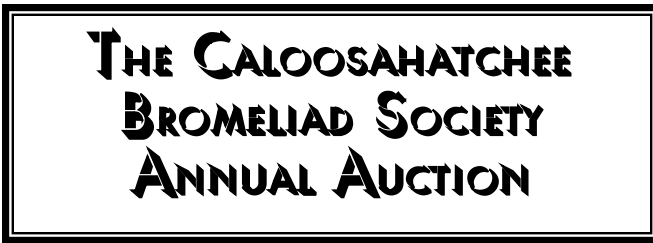
Please come early to the March Meeting and help with setup

There are no regular activities scheduled at these events.

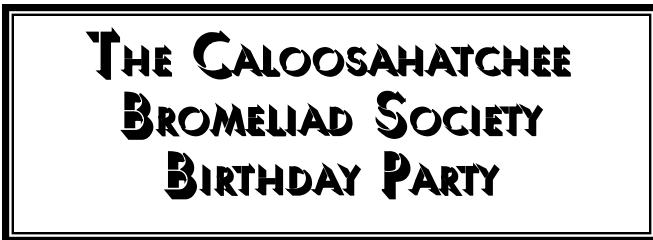
March Auction Sunday March 20th 2011

April Party Sunday April 17th 2011

Our March meeting at the Church is reserved for



Our April meeting at the Burdette's is reserved for



See inside for all the information about these fun events...

The Caloosahatchee Bromeliad Society is an active Affiliate of:



Cryptanthus Society



BSI



FCBS



FM/LC GC

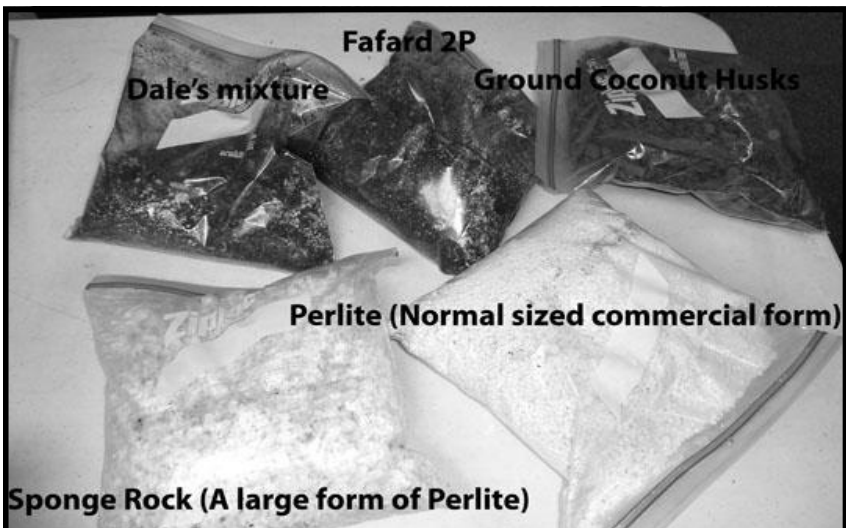
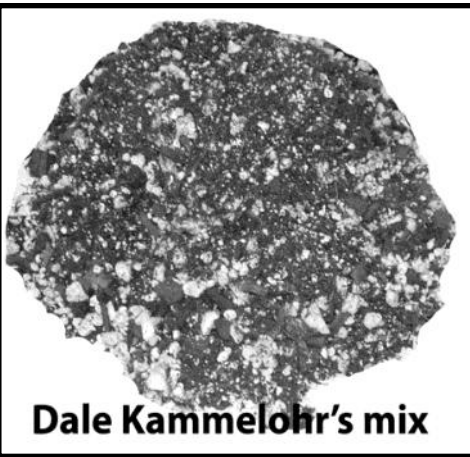
February Program

Again we were not disappointed by Terrie Bert's presentation. We learned a lot of valuable information about buying bromeliads; and this is not a lesson we want to learn from experience. Many thanks to Terrie for the program and the great plants, which were available for sale.

February Workshop

Great start to what promises to be an educational series of workshops from our new Chair. Special thanks to all who contributed in the discussion and by bringing in samples of their medium ingredients.

Dale Kammelohr brought in a sample of his mix, which he has found appropriate for most of his bromeliads. He makes no changes for his epiphytic plants and increases the amount of the Fafard for his terrestrials. Fafard is a commercial mix, which comes in a variety of formulations containing one or more of Canadian peat, perlite, processed pine bark and vermiculite. Left is Dale's mix and below are bags of the ingredients of which he uses about each amounts of the Fafard 2P, ground coconut husk and either the normal perlite or the more coarse sponge rock, which is equivalent to a larger form of perlite, for his basic medium.



Bromeliad Expose' By Larry Giroux

If you are a procrastinator like I am, you are reading this with mixed feelings... but it is springtime again in Southwest Florida and time to get outside and start your spring cleanup. Just like you tackle the inside of your home, you need to attend to your plants needs. Like the hibernating bears, winter has taken its toll. It is time to primp them and feed them for their spring and summer growth marathon. This will make your plants flourish and make you feel better too.

Determine the extent of winter damage –Start by carefully examining your plants. Remove the obvious dead or rotting leaves. Remember the trick of cutting down the center of the leaf and peeling away the lowest, affected leaves first. Take the plants outside and flush between the leaves and the cup. Shake the plants to dislodge snails or other insects. (You may have to manually pick off the slugs and snails.) Wash or gently rub any mineral deposits away.

Insects and fungus –The conditions under which we maintain our plants during Winter, are ideal for all kinds of infestations such as brown and black scale, fungal infections and mealy mildew of leaves and roots. Providing now better air circulation and removal or the aggressive treatment of the obviously infected plants in your collection may slow down the spread of the disease to your other plants in the upcoming months.

Do you need to repot? -For most of your terrestrials the answer will be – yes. Pull out a plant or two from its pot, especially a terrestrial, and check the roots. The media has probably become packed in the pot and water and nutrients will have a hard time getting to the roots. Dried peat is very hard to rehydrate, so take appropriate measures to remedy this problem. Repot using only plastic pots to avoid moisture loss during our dry Spring. You can put these pots inside clay pots to weigh them down. Using saucers for some of your water hungry plants like cryptanthus and pitcairnia will also help the lower media in the pot stay moist. Check to see if your roots are superficial. This often indicates that the media in the lower portion of the pot is deficient in either moisture or nutrients, so the roots remain in the upper portion of the pot. Here again saucers or wick watering will help with this problem. When you repot, adding a slow release fertilizer throughout your new potting mixture will encourage the roots to use the entire pot full of medium rather than waiting around the surface for what they can muster. As you often see with plants that you get from places like Home Depot, plants whose roots are impacted within their pots, definitely need to have their root-ball broken up and repotted.

Do your plants need cosmetic surgery? -Unless you live in the southernmost Florida areas, the thermometer got well below 40° again this past winter. CBS members are lucky that our show is in the autumn. This gives our plants time to recover from surgery on the brown tips, spots and shriveled leaves caused by the lower humidity during the winter, an erratic watering schedule during the dry season or cold damage. Two helpful tips to consider here: if you don't want to cut off the entire leaf, cut the leaf straight across rather than trying to contour it to look like it did before. (If you are planning on taking a plant to a show soon, wait until the night before the show and then contour your leaves, rather than having to cut it twice.) In this way you expose less of the inside of the leaf to the elements and infestations. This can be a problem especially with the terrestrials like cryptanthus and dyckias where infections progress downward along the leaves and eventually infect the meristem, killing the plants-. Following the trimming of your plants, this would be a good time to spray the cut edges of the leaves (as well as the rest of the plant, of course) with products like Captan or Physan 20 to prevent further rot and infestation.

The spring is the perfect time to determine which plants are more cold intolerant in your area. Find some of those flashy colored fingernail polishes



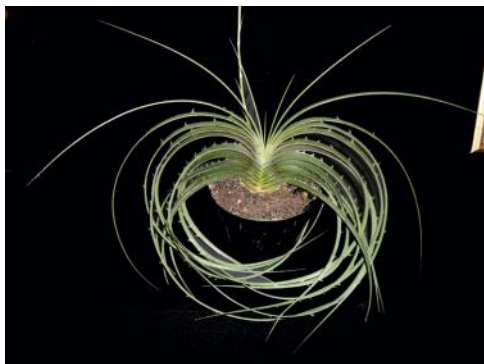
and paint the top of your labels. Next year you'll remember to take special precautions prior to winter with those, which you have marked.

Now if I can only find that time and energy to follow my own preaching and transform my gardens into my little bit of paradise.

Cold damage on a cryptanthus leaf.

Cover Photographs By Larry Giroux

I'm sure you have noticed the yellow and orange flames coming from your dyckias. The inflorescences of this genus, regardless whether the specimen is a species or a hybrid has the bell shaped flowers, which progress to full bloom over a two to three week period for us to enjoy following our dreary winter. The cover photo shows the unique arrangement of the flowers and its parts. It is a very easy bromeliad to hybridize with; actually it is too easy with ants, butterflies and most any flying insect spreading pollen from plant to plant. In a few months break open the seed pods as pictured on the back page and sow the seeds to produce your own unique cultivars.



The Genus *Dyckia* is composed of a diverse group of plants. Some of the more unusual species are this *Dyckia estevesii*, which grow mostly on two planes rather than as the circular form of most of the other dyckias such as *Dyckia marnier-lapostollei* pictured here.



Due to the ease at which dyckias will hybrid, intentionally or unintentionally, we see today a myriad of colorful and different shaped cultivars. As seen in the small collection below.



Interest in dyckias is not only restricted to bromeliad growers. Because of their succulent nature, they are ideal as garden mates to cactus and other succulents. Few bromeliads can survive extreme xeric conditions, but it is not uncommon to see dyckias for sale in nurseries in Arizona or New Mexico.

A different looking inflorescence characterizes the thickly spined *Dyckia beateae* seen below.

Photos by Larry Giroux





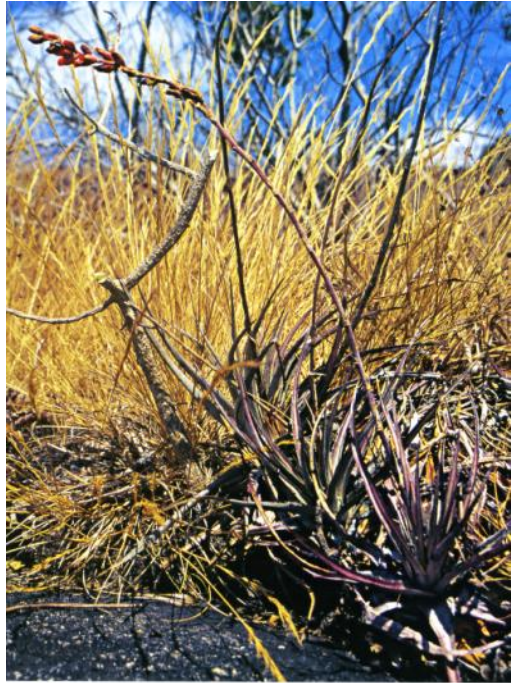
Their shape and symmetry make dyckias great plants for entries into the Decorative Container sections of bromeliad shows. This is *Dyckia 'Carlsbad' x platyphylla* an award winning exhibit by Steve Hoppin.

Most dyckias are very prolific and a challenge to divide. *Dyckia lyman-smithii* is one such plant. Dyckias vegetatively reproduce by dividing in half or setting offsets from their bases. An easier way of separating the plants is to fill a box with newspaper and placing the plants removed from their pots head down in the box; then you can cut and separate the individual plants from their rooted bottoms.



Most dyckia inflorescences are either yellow or orange. This hybrid has an interesting combination of coral colored bracts and yellow petals.

Elton Leme of Brazil is one of the World's most prolific taxonomists. Although he did not describe this species *Dyckia pernambucana*, he did take this photograph of the species in its native habitat of Brazil. Many dyckias come from arid regions categorizing them as xeric bromeliads. This picture also shows that dyckias doesn't always do well under such circumstances and would do better with more moisture than other xeric plants like cactus.



This large clump of *Dyckia* 'Big Blackie' (an unregistered hybrid) demonstrates the nature of the flower spike prior to its more typical mature appearance of clusters of bell like flowers. Although it can't be appreciated in this photo, one of the characteristics, which help distinguish dyckias from hechtias is that the inflorescence develops from the base of the lower leaves rather than the center of the plant as in the case of plants of the Genus: *Hechtia*. Also as seen in the picture on the opposite page, the dyckia spikes are minimally branched, while the spikes are mostly multi-branched with hechtias. Photos by Larry Giroux unless otherwise noted.

Annual CBS Auction MARCH 20th 2011 12:30PM - 2 PM

We will be accepting donations such as bromeliads, other tropical plants, bromeliad and gardening related items, books and art. Bromeliads should be clean and healthy and appropriately labeled. If you are unsure about the name ask other members for an ID. Certain items will be selected from donations for the SILENT AUCTION. All items will be numbered and labeled and will be displayed until the Auction begins. Please register for your bidding number at this time. **You can not bid in either Auction without a number.**

1:15 PM- 2:15 PM

Refreshment Break

This is the time for review of auction items and submission of bids for Silent Auction items, which will be set up in the hall. Each item will have a bidding sheet for you to write your bidding number and an offer. Other bidders as well as you can continuously up the bid as they wish.

2:15 PM

We take our seats and the Auction will begin following a brief business meeting and/or announcements from our President. During the Auction, Silent Auction items will be randomly removed and the winner will be announced. Until an item is taken, you may continue to up your written offer.

Conclusion of Auctions

After an item has been won it will be returned to a holding area. You will be given a claim stub immediately after you have won an item. At the completion of the auction you take your claim stubs to the cashiers and pay for your items with **cash or check**. Your claim stubs will need to be given to the workers in the holding area. Your items will be handed over to you. We ask that you help us avoid any confusion. We want everybody to get exactly what they have won as quickly as possible without mistakes. Please note that this year we will be using a two part ticket; one part stays with the plant and the winning bidder receives one part immediately after winning the item, which they will need to claim their winnings. This makes it possible for bidders to check out early; however, we encourage members to stay until the completion of the Auction when we will have several people available to check you out.

Please come to the Auction and have some fun while supporting the CBS and the FCBS with donations and the purchase of items.

Living Walls Incorporate Bromeliads and Other Epiphytes

Comments and photographs of projects of CBS member Faye Hunt, operator of the Plant Lady, were recently featured in the Neapolitan Section of the Naples Daily News. The article by regular contributor, Harriet Howard Heithaus appeared in the Friday, February 18th, 2011 issue of the Naples Daily News. The article is entitled— “Beauty & the Bastion: Living walls can serve as privacy hedges, decorative spots — even air conditioning.” The article includes several pictures of “living walls” created by Faye at locations such as Lely and the Extension Office in Collier County. These particular sites feature epiphytic bromeliads in the wall designs.

For those who have visited Naples Botanical Garden, such walls are on exhibit among their vast gardens of tropical plants, which feature a wide variety of bromeliads.

To read the article in its entirety and see other pictures go to www.naplesnews.com and search under “Living Walls”.



Faye Hunt



Faye Hunt, a master gardener and business owner who operates the Plant Lady, created this bromeliad wall in Lely.

Lely wall made up of colorful Neoregelias. Photo by Faye Hunt

Bromeliads for Special Occasions

Bromeliads, with so many types, which can tolerate a variety of lighting conditions, have become popular for many uses, *Aechmea fasciata* was referred to as the “Mother’s Day” bromeliad, since so many were used as gifts from floral shops for mothers on their special day.

The photograph below was taken by CBS member Bob Lura while driving along Del Prado Boulevard in North Cape Coral the day before Valentine’s Day. I have seen similar sights at flea markets and grocery stores before holidays. The beauty and long blooming life of many bromeliads make them ideal gifts that keep on giving.



Aechmea fasciata and its many varieties such as the variegated or spineless forms are still ideal gifts for the plant lover. With little care it will give you generations of offspring, which will continue to produce long-lasting inflorescences. Photo by Larry Giroux.



BIRTHDAY CELEBRATION 2011

This year we are returning to the home of Betsy and Bill Burdette for our Birthday Party. Their beautiful home on the Orange River is off of Orange River Blvd in Buckingham. Their address is 4931 Shady River Lane Fort Myers 33905. Burdette's contact info is 694-4738 or Betsy@Burdetteinc.com.

Please plan on arriving about 12 noon; we'll eat about 1 PM. You might want to bring a folding table and chairs to be sure of sitting room, although there should be lots of chairs. Bring food to share - such things as salads, casseroles, finger sandwiches, relish trays, and although we will provide a birthday cake, your special deserts will not go uneaten. Bring any special beverages for yourself or to share, although we will provide basic beverages.

Our Birthday and Holiday raffles are always an important part of our celebration so try to bring nice clean plants (nice plants other than bromeliads are also appreciated) and bromeliad related items, for our raffle. Consider items that other members would relish. Friendship Plants are those extra plants from your garden that might be of value to other members. These freebies are always appreciated.

With the party so close to Easter this year, Betsy has suggested our contest this year reward the best Easter bonnets for women and fancy hats incorporating bromeliads and bromeliad parts for men.

Friends, neighbors and relatives are always welcome to our parties; so bring them along for a great time.

CBS BOARD MEETING FEBRUARY 20, 2011

LOCATION: St. John the Apostle Church, Ft. Myers, Fl.
ATTENDANCE: 41; including new member Joe McKenzie and the following guests: Diane Brown, Sandra Drake, Vic Medore, Karen Alleger and Ingrid Holland. **WORKSHOP:** Presented by our new Workshop Chair, Catherine Peterson, "Back to Basics". Members brought in and discussed potting mediums. Recommended terrestrial mediums included: Fafard 3S Mix containing peat moss, bark and perlite; Fafard 2P containing 50% peat moss and 50% perlite; orchid mix. Epiphytic mediums require a looser mix that can be achieved with the addition of sponge rock and/ or coir to your potting medium. **PROGRAM:** "Best Buy Bromeliads" by Terrie Bert. A live and lively presentation by Dr. Terrie Bert chock full of tips and tricks for buying bromeliads to add to your collection. Dr. Bert encouraged new members to look at the FCBS website and familiarize yourself with the genera before shopping. Pups are the best bet for your pocketbook and unpotted pups will be even more of a savings. If you do buy a potted plant report in a six-inch pot using your own medium. Dr. Bert recommended that you experiment with increasing light on the sturdier leaved bromeliads. **BREAK:** A thirty-minute break was enjoyed. Thank you to Mary McKenzie and all the volunteers for the refreshments, set-up and breakdown. **CALL TO ORDER:** President, Vicky Chirnside called the meeting to order at 3:25pm. **MINUTES:** Dr. Larry Giroux motioned to accept the minutes from January 16th, 2011. Edith Wenzlaff seconded the motion. **COMMITTEE REPORTS:** Reports and announcements will appear on the bulletin board for the membership to read. **NEW BUSINESS:** The membership voted to uphold the 2011 donations as written in the Summary of the CBS Board Meeting on January 16th, 2011. BSI and The Cryptanthus Society would receive \$200.00 each; Six Mile Cypress, Friends of Fakahatchee and The Naples Botanic Garden would receive \$100.00 each. We will hold \$200.00 in reserve for BIC. Dr. Larry motioned to accept the vote and Bob Lura seconded. Dr. Larry reminded us that the CBS Auction will take place on March 20th. Please arrive at 12:30 with your plants or art, jewelry, books etc. The fun begins at 2pm. We are looking for a CBS Birthday Party site for April. **DOOR PRIZE:** Barbara Johnson donated Neo. 'Heat Wave' which was won by David Brzoska. **SHOW & TELL:** Conducted by Dale Kammerlohr. **RAFFLE:** Conducted by Dr. Larry Giroux and assisted by Dolly Dalton. **ADJOURNMENT:** President, Vicky Chirnside adjourned the meeting at 3:55pm.
Respectfully submitted by, MaryLynn Murphy, CBS Secretary

CBS BOARD MEETING FEBRUARY 20, 2011

MEMBERS PRESENT: Vicky Chirnside, President; Eleanor Kinzie, Past-President; Marsha Crawford, Vice-President; Catherine Peterson, Workshop Chair; Larry Giroux, Editor; MaryLynn Murphy, Secretary.

Upon, Treasurer, Betty Ann Prevatt's request, the Board discussed the generous donation of Peggy Bailey. The Board agreed to use the thirty dollar

donation to create an award in Peggy's honor at the 2011 CBS Show. Since Peggy's favorite genus was Neoregelia the award will be for that category. Vicky Chirnside, Eleanor Kinzie and Marsha Crawford will visit the Covenant Presbyterian Church and see if it suits our needs.
Respectfully submitted, MaryLynn Murphy, CBS Secretary

Calendar of Bromeliad Events

March 12th, 2011 Third Annual "March in the Park" 4125 SE 20th Pl Cape Coral (End of Beach Parkway) 9 AM- 4 PM. Free Admission. For info call 239-540-7988 or e-mail Huffmom5@aol.com

March 20th, 2011- Annual CBS Auction

ST. JOHN the APOSTLE CHURCH 3049 McGREGOR Ave. FT. MYERS. Start receiving donations at 12:30PM.

March 26th & 27th, 2011, The Bromeliad Society of Broward County's Biennial Bromeliad Show and Sale. Sat 9-5PM & Sun 9-4PM, Volunteer Park Community Center 12050 W. Sunrise Blvd. Plantation, Fl. For info call 954-530-0076 or see www.bromeliadsocietybc.com.

April 1st-3rd, 2011- Tropiflora Spring Festival Tropiflora Nursery, 3530 Tallavast Road, Sarasota, 941-351-2267 (<http://www.tropiflora.com>)

April 1st - 3rd, 2011- Bromeliad Guild of Tampa Bay Show and Sale in conjunction with Tampa Federation of Garden Clubs Show 2629 Bayshore Boulevard, Tampa, Florida. Show hours April 9th 9:00 AM to 5:00 PM April 10th 10:00 A.M. to 3:00 PM. Bromeliad Show Chairman: Tom Wolfe (813) 961-1475 Flower Show Chairman: Kathy Echevarria (813) 877-3357.

April 17th, 2011- CBS Birthday Party

April 16th and 17th, 2011 Bromeliad Society of South Florida Show and Sale Fairchild Gardens, Miami

April 30th - May 1st, 2011 Sarasota Bromeliad Society Show and Sale. Selby Gardens, Sarasota

December 2nd-4th, 2011 The CBS Bromeliad Show and Sale. Terry Park. Entries and Judging Friday, Show and Sale open to the public - Saturday 9AM-5PM and Sunday 10AM-4PM

Read the Expanded Newsletter

I have been asking members who have e-mail, if they can start receiving the Meristem exclusively by e-mail and I have gotten a good response from the membership. I want to remind the members that even if they can not receive the e-mail version, because they have dial-up internet service, they can still go to www.fcbs.org and read the expanded Meristem directly online. Go to www.fcbs.org to view this expanded electronic issue, if you are not already opting to receive it or let me know if you want me to send it to you. Editor



**ANNUAL AUCTION AT THE
MARCH MEETING
BIRTHDAY PARTY AT THE
BURDETTE'S IN APRIL
Please Donate Items and Bid on Others**



**Dr. Larry Giroux, Editor
3836 Hidden Acres Circle N
North Fort Myers FL 33903
(239) 997-2237
DrLarry@comcast.net**

This is your March/ April Newsletter

