



**CALOOSAHATCHEE
BROMELIAD
SOCIETY'S
CALOOSAHATCHEE
MERISTEM**

3836 Hidden Acres Circle N
North Fort Myers FL 33903
(239) 997-2237

January 2008

DrLarry@COMCAST.NET



**Best of Show - Horticulture
The Mulford B. Foster Award
and
Best Neoregelia Award**

Neoregelia (carolinae x 'Hannibal Lector') x 'Norman Bates'
Exhibitor - Michael Kiehl

CALOOSAHATCHEE BROMELIAD SOCIETY OFFICERS

EXECUTIVE COMMITTEE

PRESIDENT Tom Foley (tefoley24@gmail.com)
VICE-PRESIDENT Donna Schneider (sgarydonna@aol.com)
SECRETARY Luli Westra
TREASURER Betty Ann Prevatt (bprevattpc@aol.com)
PAST-PRESIDENT Steve Hoppin (steveandlarry@comcast.net)

STANDING COMMITTEES CHAIRPERSONS

NEWSLETTER EDITOR Larry Giroux 997-2237 (DrLarry@comcast.net)

FALL SALES CHAIR

FALL SALES Co-CHAIR

FALL SHOW CHAIR No Show in 2008

FALL SHOW Co-CHAIR No Show in 2008

PROGRAM CHAIRPERSONS

WORKSHOP CHAIRPERSON

SPECIAL PROJECTS

Senior CBS FCBS Rep. Vicky Chirnside (vickychirn@aol.com)

Co-Junior CBS FCBS Reps. Debbie Booker & Tom Foley

Alternate CBS FCBS Rep. Dale Kammerlohr (tropdsk@strato.net)

OTHER COMMITTEES

AUDIO/VISUAL SETUP

DOOR PRIZE

HOSPITALITY

SPECIAL HOSPITALITY

RAFFLE TICKETS

RAFFLE COMMENTARY

GREETERS/ATTENDENCE

SHOW & TELL

FM-LEE GARDEN COUNCIL

LIBRARIAN

ASSISTANT LIBRARIAN

The opinions expressed in the Meristem are those of the authors. They do not necessarily represent the views of the Editor or the official policy of CBS. Permission to reprint is granted with acknowledgement. Original art work remains the property of the artist and special permission may be needed for reproduction.



THE CALOOSAHATCHEE BROMELIAD SOCIETY

MEETING TIME AND PLACE:

January Meeting: SUNDAY January 20th, 2008

ST. JOHN the APOSTLE CHURCH 3049 MCGREGOR Ave. FT. MYERS.
DOORS WILL BE OPEN AT 12:30 FOR SETUP.

Larry Giroux, our January speaker will not be bringing plants for sale; so MEMBERSHIP SALES WILL BE PERMITTED at the January meeting.

Friendship plants, Raffle items and Door Prizes are always welcome.

(Please contact Barbara Johnson if you have a Door Prize to donate.)

January Workshop

“Show and Sale Critique”

By Betty Ann Prevatt and Eleanor Kinzie

(Begins at 1:15 PM)

This will be the time to give your comments and opinions about the Show and Sale - What could be changed and what worked. This is an opportunity to give input to help make future Shows and Sales better, if possible. In addition, through the magic of computers, we will be able as requested by the entrants and as time permits, to review some of the entries of the Show and answer the question you have on “Why or How come?” you got a certain ribbon. Bring your entry tag or the show plant’s name to the Workshop.

January Program

“Bromeliads in All Directions”

By Larry Giroux

(Begins following the refreshment break)

Your Editor has done lots of traveling in the past year. In his yearly review for the membership he will show photos of trips, shows and other events he’s participated in since his last presentation to the Society.

The Caloosahatchee Bromeliad Society is an active Affililate of:



FM-LCGC



Cryptanthus
Society



Bromeliad Society
International



FCBS

President's News

By Tom Foley

Dear Members -

With the challenge of being the President, I am looking forward to the New Year of 2008 for the CBS. I ask that you all bear with me as I begin my office. In the next weeks I will be asking for volunteers to help me with a variety of easy tasks necessary to keep the CBS functional. Please step up to the plate and help in any little way you can; your Society always needs an extra hand.

Remember to talk to your plants; they will love you back with blooms.

Sincerely,

Tom

SOCIETY NOTES

Welcome to New Member

Pat Ford 3260 Sixth Ave St. James City 33956 XXX-XXXX

New CBS Officers



At the Holiday Party the new 2008 CBS officers were installed. From left to right are President - Tom Foley, Vice-president - Donna Schnieder, Secretary - Luli Westra and Treasurer - Betty Ann Prevatt.

The 2007 CBS Holiday Party

The scenery, the food, the games, the raffle and of course the guests never seem to get old or redundant. Our Holiday Party at the Burdette's was full of good times as usual.

I hope Bill and Betsy had as good a time as everyone else seemed to have.

Our heart felt Thanks go out to Bill and Betsy for allowing us to enjoy their home and gardens again for the CBS Holiday Party.

(See all the color pictures of the Party in the online

Winners of the Holiday Contest. Sue Gordon created a holiday wreath, Donna Schneider had a beautiful table arrangement of various bromeliad blooms and Larry Giroux won with his table top arrangement of evergreens, *Cryptanthus* ‘Ruby’s and candles. Prizes seen in the photograph were Grant Groves Hybrids.



November Program



Brian Weber

Although Tropiflora has the same problems, which we all face at sometime in our growing, they obviously have them on a much greater scale. Brian Weber, Chief grower at Tropiflora in Sarasota, provided us with pictures and solutions to such problems as weeds, scale, rats and heat damage. Many thanks to Brian for this different perspective on how to tend to our bromeliads.

January Program

2007 saw Larry Giroux traveling to all points of the compass. Through the lens of his camera he will bring us highlights of some of his adventures in search of bromeliads.

Included in this review are shots of his trip to Guatemala, Brazil, the ICS and local shows and gardens.

PHOTOS from the 2007 HOLIDAY PARTY









Bromeliad Expose By Larry Giroux

2007 CBS Show Winners

Awards	Plant	Exhibitor
Best of Show- Horticulture	<u>Neo</u> (<u>carolinae</u> x HL) x Norman Bates	MichaelKiehl
Best of Show- Artistic	<u>Crypt.</u> 'Eruption'	Larry Giroux
Sweepstakes(Tie)	Represented by <u>Vr heiroglyphica</u>	Steve Hoppin
	Represented by <u>Cryptanthus</u> 'Corinne'	LarryGiroux
Division I	<u>Neo</u> <u>carcharodon</u> x <u>johannis</u>	MichaelKiehl
Division II	<u>Bil.</u> 'Hallelujah' x <u>brazilensis</u>	MichaelKiehl
Division III	<u>Ae</u> 'White Knight'	Steve Hoppin
Division I Sec A	<u>Neo</u> 'Kawika #12'	Donna Schneider
Division I Sec B	No winner	
Division I Sec C	No winner	
Division II Sec A	<u>Neo</u> (Fireball x <u>compacta</u>) x Fireball	Terrie Bert
Division II Sec B	<u>Pit. smithiorum</u>	Steve Hoppin
Division II Sec C	No winner	
Division III Sec A	No winner	
Division III Sec B	<u>Til. hammeri</u>	Terrie Bert
Division IV Sec A	<u>Cr.</u> 'Absolute Zero' in Sea Shell	Larry Giroux
Division IV Sec B	<u>Cr.</u> 'Ruby' (Mini Art Arrangement)	Larry Giroux
Division V	No winner	
Div VI Sec A (Judges)	<u>Cryptanthus</u> 'Ti'	George Aldrich
Div VI Sec B (Novice)	<u>Dyckia</u> Hybrid	Ed Wenzlaff
Div VI Sec C (Cut Inflow)	<u>Orthophytum</u> 'Starlite'	Larry Giroux
Div VI Sec D (Unnamed)	<u>Cryptanthus</u> species	Steve Hoppin
Div VI Sec E (Artistic Exp)	Alcanterea drawing	Deb Booker
Bob Whitman Best		
Crypt Species	<u>Cryptanthus warasii</u>	Steve Hoppin
Warren Loose Best		
Crypt Hybrid	<u>Cryptanthus</u> 'Red Eye Gravy'	Steve Hoppin
Best Multiple Crypt	<u>Cryptanthus</u> 'Calypso'	Steve Hoppin
Cryptanthus Sweepstakes	Represented by <u>Crypt. bivittatus</u>	Larry Giroux
Best Aechmea	<u>Ae</u> 'White Knight'	Steve Hoppin
Bloom. Tillandsia	<u>Til. chiapensis</u> x <u>tricolor</u>	Terrie Bert
Non-bloom Tillandsia	<u>Til.</u> 'Tropiflora'	Betty Ann Prevatt
Best Pitcairnia	<u>Pit. smithiorum</u>	Steve Hoppin
Best Neoregelia	<u>Neo.</u> (<u>carolinae</u> x 'HL') x 'Norman Bates'	Michael Kiehl
Best Dyckia	<u>Dyckia</u> 'Arizona'	Brian Weber
Members Choice	<u>Encholarium horridum</u>	Terrie Bert
Members Choice 1st		
Runnerup	<u>Aechmea bracteata</u>	Edward Wenzlaff
Member Choice 2nd		
Runnerup	<u>Quesnelia marmorata</u> 'Tim Plowman'	Eloise Beach

“Color My World with Bromeliads”



Co- Sweepstakes Winner
Represented by *Cryptanthus* ‘Corinne’
Winner Larry Giroux

Best of Show - Artistic
Morris Henry Hobbs Award -
Cryptanthus ‘Eruption’

Exhibitor - Larry Giroux



Co- Sweepstakes Winner
Represented by
Vreisea hieroglyphica
Winner Steve Hoppin



Division I - *Neoregelia*
carcharodon x *johannis*
Exhibitor - Michael Kiehl



Division III & Best Aechmea
Aechmea ‘White Knight’
Exhibitor - Steve Hoppin



Best Blooming Tillandsia
Tillandsia chiapensis x *tricolor*
Exhibitor - Terrie Bert



Division II - *Billbergia* 'Hallelujah'
x brazilensis
Exhibitor - Michael Kiehl



Div I Sec A - *Neoregelia* 'Kawika #12'
Exhibitor - Donna Schneider



Div II SecA - *Neoregelia* (Fireball *x compacta*) *x Fireball*
Exhibitor - Terrie Bert

Div II SecB & Best Pitcairnia-
Pitcairnia smithiorum
Exhibitor - Steve Hoppin



Division IV SecA
Cryptanthus 'Absolute Zero' in Sea
Shell
Exhibitor - Larry Giroux



Best Dyckia - *Dyckia* 'Arizona'
Exhibitor - Brian Weber



**Div III SecB -
Tillandsia hammeri
Exhibitor - Terrie Bert**



**Div IV SecB -
“My Ruby Molecular World”
Cryptanthus ‘Ruby’
Exhibitor - Larry Giroux**

**Div VI SecB - *Dyckia* hybrid
Exhibitor - Ed Wenzlaff**



**Div VI SecC - *Orthophytum* ‘Starlite’
Exhibitor - Larry Giroux**

**Div VI SecD - *Cryptanthus* Species
Exhibitor - Steve Hoppin**



**Warren Loose Best Hybrid Award
Cryptanthus ‘Red Eye Gravy’
Exhibitor - Steve Hoppin**

**Best Non-blooming Tillandsia
Tillandsia ‘Tropiflora’
Exhibitor - Betty Ann Prevatt**



Div VI SecE - Alcanterea Drawing
Artist and Winner - Deb Booker



Bob Whitman Best Species Award
Cryptanthus warasii
Exhibitor - Steve Hoppin



Best Multiple Cryptanthus
Cryptanthus 'Calypso'
Exhibitor - Steve Hoppin



Cryptanthus Sweepstakes
Represented by *Cryptanthus bivittatus*
Exhibitor - Larry Giroux

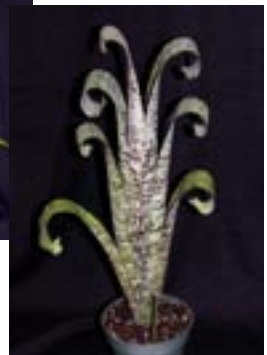


Members Choice Award Winner -
Encholarium horridum
Exhibitor - Terrie Bert

(R) 1st Runner-up
Members Choice Award
Aechmea bracteata
Exhibitor- Ed Wenzlaff



(Far R) 2nd Runner-up Members Choice Award
Quesnelia marmorata 'Tim Plowman'
Exhibitor - Eloise Beach



October CBS Meeting Minutes

DATE: Sunday, October 21, 2007. **LOCATION:** St. John the Apostle's Metropolitan Community Church; 3049 McGregor Blvd. Ft. Myers, FL **ATTENDANCE:** Approximately 45 Members, no Guests

WORKSHOP: Eleanor Kinzie and Betty Ann Prevatt provided a mock bromeliad show with judging comments offered by Steve Hoppin, Larry Giroux, Vicky Chirnside and Dianne Molnar. Tips were offered on how to prepare plants for the show. An extremely professional and helpful presentation. Thanks to all!

CALL TO ORDER: At 2:00 PM the meeting was called to order by President Steve Hoppin. Introduction of new member PAT FORD. Welcome Pat, thanks for joining. **MINUTES** of September meeting. No corrections, additions or deletions noted. Moved to accept by Donna Schneider, Second by Larry Giroux. **OLD BUSINESS:** Election Committee Chairperson Eleanor Kinzie, with Committee Members Dolly Dalton and Luli Westra, delivered slate of nominations for CBS Officers for 2008: President: Tom Foley; VP: Donna Schneider; Secretary: Luli Westra; Treasurer: Betty Ann Prevatt..

COMMITTEE REPORTS

1. Steve Hoppin, 2007 Show Chairman

a. Confirms date Friday, Nov 30, Sat & Sun, Dec 1 & 2. Steve asks for additional help for setup and teardown. b. Show/Sale Committee Reports. Betsy Burdette describes promotional plans including signage and press releases. Requests help with signage. c. Show Schedule; distributed at workshop and meeting by Betty Ann. d. Other show concerns, call Steve Hoppin.

2. Brian Weber, 2007 Sale Chairman

a. Describes sales tag requirements and offers sales tags. b. Brian suggested that for other concerns, sellers should call him.

3. Larry Giroux handling Show Awards, requests donations; points out the need to recognize winners with awards, and requests donations to provide for them.

4. Vicky Chirnside, CBS Representative to FCBS, reported on FCBS Extravaganza. A great time was had by all attendees. Vicky thanked members for plant donations and announced profits for FCBS of approximately \$5,000.

5. FCBS Rep Vicky announced that the new FCBS Book "Starting with Bromeliads" by Bromeliad Society of Queensland, Australia, is available thru CBS for \$18.00 until show, then \$20.

6. New Committee formed "Garden Council Botanical Garden". This group is recruiting interested individuals to work together as a group and draft design of a functional Bromeliad Garden for the Ft. Myers/ Lee County Botanical Gardens on Virginia Avenue, Ft. Myers. Committee Chair, Steve Hoppin; Members Betty Ann Prevatt, Larry Giroux and Eleanor Kinzie.

ANNOUNCEMENTS

1. Mary McKenzie – FMLC Garden Council Annual Strolling Flower Show, Thursday and Friday, Feb. 7 & 8, 2008. Judging on Thursday.

2. Larry Giroux – BSI-WBC, Cairns, Australia. 24-30 June, 2008. Arrangements include alternative accommodations. If you ever have wanted to go to Australia and see their beautiful bromeliads as well as others from around the globe, here's your chance.

3. The Bonsai Show and Sale is Friday and Saturday, Nov 9& 10, here at St John's. Raffle tickets were sold and we'll see who's the winner.

4. Meristem, our monthly newsletter is available on line @FCBS.org. The online version is several pages longer than the mailbox variety, and reading it there saves \$\$\$ for CBS. You can also sign up to have the NL sent to your e-mail address.

5. Kiti Wenzel passed away on Sept 14th. Larry Giroux deserves many thanks for a memoriam to Kiti, by dedicating the October Meristem to her. He included a brief lifestory and several color copies of her incredibly beautiful and inspired art work. She will be dearly missed for her company and her contributions to CBS. Thank you Larry.

6. Eloise Beach notified CBS of a new novel, published and on sale, inspired by true events By Chester Skotak. "Searching for Miss Fortuna, the Hunt for a Bromeliad" is on sale at Amazon.com for \$19.95 + shipping, or can be ordered by calling 1-877-311-5100. Betty Ann had a few copies for \$18.00. May have some at Nov. meeting and at the Sale.

7. Meeting rooms for CBS are set up by Ross Griffith. Ross is a hard working member of CBS and St. John the Apostle's Church. Set-up is a big job and we owe Ross for his effort. Ross is in the process of re-landscaping the church with bromeliads and palms and other nectar producing plants to attract butterflies and birds. When you thin out your garden and/or have bromeliads or other suitable plants to spare, please consider donating to the botanical garden he is creating.

SHOW AND TELL: Dale Kammerlohr. A great variety of many bromeliad genera were brought in by members. Dale displayed and described these with many comments from the owners and the audience. This always is one of the highlights of our meetings. Thanks Dale and the contributors. BREAK: A 20 minute break was declared by President Steve. REFRESHMENTS: Members generously provide many great refreshments for the break. We must thank MARY MCKENZIE, assisted by SUE GORDON for their hard work and leadership in organizing the lunch. PROGRAM Ray Lemieux did a wonderful presentation on "Growing Terrestrial bromeliads". Ray is a gifted grower and an entertaining demonstrator. He described methods for separating and growing some of the "stickier" genera including *Dyckia*, *Hechtia* and others. Thanks Ray, for a great show! Raffle: Several dozen really great bromeliads were raffled to members, with Larry Giroux as commentator.

Adjournment time was 5:00 PM

Breakdown was led by future Pres, Tom Foley, assisted by many members. Breakdown can be a big job, and we all need to assist in stowing chairs and tables, And general cleanup. Thanks to all participants.

Submitted by Chuck Ray, CBS Secretary

November CBS Meeting Minutes

DATE: Sunday, Nov 18, 2007. LOCATION: St. John the Apostle's Metropolitan Community Church 3400 McGregor Blvd; Ft. Myers, FL ATTENDANCE: 45 members

WORKSHOP: Eleanor Kinsey and Betty Ann Prevatt completed a review of last

minute details for Show and Sale. Particular attention was devoted to entry cards and their preparation. Excellent as always, thank you ladies! Mary McKenzie, Chair of Clerk Committee requests additional volunteers to assist at show.

CALL TO ORDER: President Steve Hoppin called meeting to order at 2:00 PM. There were no new members or guests to introduce and recognize.

Steve reminds members that fellowship begins at 12:30 PM. Members are encouraged to come early, and to stay after meeting to assist with meeting breakdown.

MINUTES of the October meeting were unavailable at printing time. October and Nov minutes will be published in the January CBS Newsletter

OLD BUSINESS: None. NEW BUSINESS: Election of 2008 CBS Officers

Election Chairperson Eleanor Kinzie presented the following slate of officers as selected by the Nominating Committee:

1. President- Tom Foley; VP-Donna Schneider; Secretary - Luli Westra; and Treasurer, Betty Ann Prevatt.
2. Nominations were opened from the floor; there being none
3. Vote; President Steve called for the vote. Unanimous Aye.

Officers will be sworn in to their elected positions at the CBS Holiday Party. Committee Chairs will remain in office until the January meeting.

COMMITTEE REPORTS:

1. Larry Giroux reports BSI-WBC in Cairns, Australia to be held 24-30 June, 2008. BSI has arranged special rates with Qantas Airline of about \$2000 round trip from Los Angeles, to include three in-country flights. Website and additional information in the November Meristem.
2. Meristem: Editor Larry again requests members to sign up for online versions, in order to save CBS \$2.00+ in mailing and printing cost per member per month, and to receive an enlarged full colored version.
3. Our thanks to Ross Griffith for his continuing efforts on behalf CBS and our meeting location. Ross is redecorating the grounds with palms, bromeliads and other nectar producing plants to attract birds and butterflies. Ross needs additional bromeliads to include. Next time you thin out or clean up, remember Ross' needs. He even would accept bloomed out mother plants, in order to get the pups. Please remember Ross and all he has done for CBS.
4. FM/LC GC will have their "Strolling Flower Show" on Feb 7 & 8. Show Chair Madeline Evans has complete details; 267-0961.
5. CBS Holiday Party, December 16, at Bill & Betsy Burdette's home. CBS will provide paper & plastic items, iced tea & a meat entrée. Members are requested to bring a holiday dish, folding chair &/or table, and nice plants for friendship and or raffle. Members should plan to participate in the Holiday Contest including tree ornament, tree top decoration, a wreath or door decoration and tabletop arrangement. Prizes will be awarded for the top three entries. The only business

to be conducted at the party will be installation of the 2008 Officers. The Nov Meristem included additional directional info and maps.

6. CBS Membership Dues Increase— Membership rates have not been increase in more than 10 years. Due to increased operating expenses, the CBS Board of Directors has approved an increase of \$5.00 rate increase, for each membership category, increases to take effect with next years dues.

New price	New Member	Renewal
CBS Single	\$20.00	\$15.00
CBS Dual	25.00	20.00

7. Bonsai Raffle; Oct CBS Meeting winner, Les Molnar, Dianne Molnar's husband.

DOOR PRIZE: A lovely Bilbergia provided by Buddy Singleton

SHOW & TELL: By Brian Weber; many beautiful plants were shown and described by Brian, with comments from members.

BREAK; A half hour break was called by President Steve.

REFRESHMENT SETUP was provided by Mary McKenzie and Sue Gordon. Many delectibles provided by members.

PRGRAM: "Bromeliads, From a Commercial Growers Perspective"; by Brian Weber. A interesting perspective of problems faced by Commercial Growers. Great job, Brian!

RAFFLE: Commentator Larry Giroux assisted by Bob Lura. Several dozen bromeliads, associated materials, and a number of boxes and baskets provided by Ross Griffith, were raffled to members.

ADJOURNEMNT, BREAKDOWN: Adjournment called at 4:10 PM by President Steve.

Submitted by Chuck Ray, CBS Secretary

Caloosahatchee Bromeliad Society Dues

Enclosed in this mailing is a renewal form for your 2008 CBS Dues. Please complete the form and update your information. Although we may already have this information, please resubmit the completed form. Give the form or mail it with your payment to

**Betty Ann Prevatt
2902 Second Street
Fort Myers, Fl 33916**

EVENTS CALENDER

April 19th and 20th, 2008

Annual Bromeliad Society of South Florida Show and Sale at Fairchild Tropical Gardens. Miami, Florida. Judging on Friday April; 18th.

April 19th and 20th, 2008

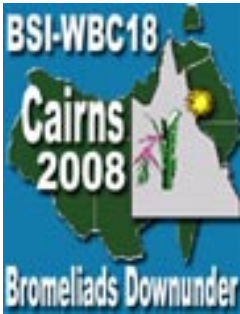
Annual Sarasota Bromeliad Society Show and Sale at Selby Botanical Gardens, Sarasota, Florida. Judging on Friday April, 18th.

May 3rd and May 4th, 2008

Greater New Orleans Bromeliad Society Show and Sale. Lakeside Mall, Metairie, LA. Contact Tim Calamari at 504-362-6809 or lara57@cox.net .

June 7th and 8th, 2008

River Ridge Bromeliad Society Show and Sale, New Orleans, LA, For additional information contact Bryan Windham at brykool69@yahoo.com.



Bromeliads Down Under 18th World Bromeliad Conference 24-30 June 2008

The Plant Show will be judged on Thursday, Sales will open on Thursday night, the Rare Plant Auction on Friday night and Banquet on Sunday night. There will be local garden tours and optional discounted Reef and Rainforest tours. Both International and Australian Speakers will present the Seminars on Friday, Saturday & Sunday. Each Delegate is invited to enter plants and artistic entries in both the competitive Show Categories.

For additional info link to <http://www.bromeliadsdownunder.com/> Inquiries can also be sent to Lynne Hudson, WBC Chair 47 Boden Street, Edge Hill QLD 4870 or LynnHudson@BromeliadsDownUnder.com

<http://www.qantas.com.au/regions/dyn/us/specials/webDeals217>

Joyce Brehm has provided me with the above Internet address to help those who are planning on going to Australia for the World Bromeliad Conference. For a basic cost of \$1599, (this does not include taxes and airport fees) you can fly from San Francisco or Los Angeles to Sydney Australia. Included in this charge are three domestic segments, i.e., Sydney to Cairns, Cairns to Darwin, Darwin to Sydney, which permits you to see other places in Australia. The airfare from Fort Myers to Los Angeles would be additional. Since American Airlines and Qantas are Frequent Flyers partners, the 25,000 miles earned on the trip to Australia could actually pay for your trip from Fort Myers to Los Angeles.

To All Our Members: Enjoy your hobby more

Join the Bromeliad Society International

for less than \$0.60 per week

Join the Cryptanthus Society

for less than \$0.40 per week

and as a first time subscriber the CBS will pay for

1/2 of the first year. So for \$0.50 per week you can get 2 great colorful Journals and be part of the bigger picture.

See Betty Ann Prevatt for more information.



CALDOSAHATCHEE BROMELIAD SOCIETY

3836 HIDDEN ACRES CIRCLE N
NORTH FORT MYERS, FL 33903
E-MAIL - DRLARRY@COMCAST.NET



Cryptanthus hybrid C: 'Miss Priss' x 'Angel Dust' made by Jim Irvin was recently registered in the Cryptanthus Society Journal Vol XXII, No.4 as *Cryptanthus* 'Eleanor Kinzie'. Both Eleanor and Jim are charter members of CBS, founded in 1980.

**DUES FORM IS ENCLOSED. PLEASE SUBMIT IT
WITH PAYMENT TO BETTY ANN PREVATT**