



**CALOOSAHATCHEE
BROMELIAD
SOCIETYs
CALOOSAHATCHEE
MERISTEM**

3836 Hidden Acres Circle N
North Fort Myers Fl 33903
(239) 997-2237

DrLarry@COMCAST.NET

September 2008



*Hobbyist Mulford B. Foster Best of Show Winner
Guzmania 'Gisela Don Pepe' (reverse form) Exhibitor- Greg Oldano*



*Mulford B. Foster Commercial Best of Show Winner
Guzmania 'Georgia' Exhibitor- The Olive Branch (Olive and Len Trevor)*

CALOOSAHATCHEE BROMELIAD SOCIETY OFFICERS

EXECUTIVE COMMITTEE

PRESIDENT Donna Schneider (sgarydonna@aol.com)
VICE-PRESIDENT Ross Griffith
SECRETARY Luli Westra (lulidave@yahoo.com)
TREASURER Betty Ann Prevatt (bprevattpc@aol.com)
PAST-PRESIDENT Steve Hoppin (steveandlarry@comcast.net)

STANDING COMMITTEES CHAIRPERSONS

NEWSLETTER EDITOR Larry Giroux (DrLarry@comcast.net)
FALL SALES CHAIR Brian Weber (BrianWeber1b@aol.com)
FALL SALES Co-CHAIR Dave & Geri Prall
(PalmTreeGardens@hotmail.com)
PROGRAM CHAIRPERSONS Deb Booker (malibudeb7280@embarqmail.com)
WORKSHOP CHAIRPERSON Steve Hoppin (steveandlarry@comcast.net)
SPECIAL PROJECTS Deb Booker until replacement found
Senior CBS FCBS Rep. Vicky Chirnside (vickychirn@aol.com)
Co-Junior CBS FCBS Reps. Debbie Booker & Tom Foley

OTHER COMMITTEES

AUDIO/VISUAL SETUP Tom Foley (tefoley24@earthlink.net);
BobLura
DOOR PRIZE Barbara Johnson (lion56@aol.com)
HOSPITALITY Mary McKenzie (manytoes@aol.com);
Martha Wolfe, Sue Gordon
SPECIAL HOSPITALITY Betsy Burdette (betsy@burdetteinc.com)
RAFFLE TICKETS Greeter/Membership table volunteers - Luli Westra,
Dolly Dalton, Eleanor Kinzie, etc.
RAFFLE COMMENTARY Larry Giroux
GREETERS/ATTENDENCE Betty Ann Prevatt, Dolly Dalton(dollyd@comcast.net),
Luli Westra
SHOW & TELL Dale Kammerlohr
FM-LEE GARDEN COUNCIL Mary McKenzie
LIBRARIAN Sue Gordon
ASSISTANT LIBRARIAN Kay Janssen

The opinions expressed in the Meristem are those of the authors. They do not necessarily represent the views of the Editor or the official policy of CBS. Permission to reprint is granted with acknowledgement. Original art work remains the property of the artist and special permission may be needed for reproduction.

The front and back covers feature pictures of the big winners at the 2008 Cairns BSI World Bromeliad Conference. The three included here are the Hobbyist Mulford B. Foster Award for Best Horticultural entry and Morris Henry Hobbs Award for Best Artistic entry and the Commercial Mulford B. Foster Award.



THE CALOOSAHATCHEE BROMELIAD SOCIETY

MEETING TIME AND PLACE:

September Meeting Sunday September 21st 2008
ST. JOHN the APOSTLE CHURCH 3049 McGREGOR Ave. FT. MYERS.
DOORS WILL BE OPEN AT 12:30 FOR SETUP.

MEMBERSHIP SALES WILL NOT BE PERMITTED
at the September Meeting.

Friendship plants, Raffle items are always welcome.

There will be a Door Prize and Show and Tell

September Program

“Growing the Jewels of the New World”

By Terrie Bert

Due to conflicting obligations, Terrie switched with Jay Thurrott, who gave the August presentation. Terrie returns this month to instruct us on her way of growing a variety of bromeliads. She will also be bringing plants for sale.

September Workshop

“A Review of Select Neoregelias”

By Geri and Dave Prall

With examples from their collection of neoregelias, the Pralls will discuss the genetics of some of the mini neos and cultivars of *Neoregelia* ‘Hannibal Lector’.

The Caloosahatchee Bromeliad Society is an active Affililate of:



FM-LCGC



Cryptanthus
Society



Bromeliad Society
International



FCBS

Society News

President's Message By Donna Schneider

Hope everyone is having a good summer. It seems that we are finally catching up on our rain fall. We sure lucked out with this last storm, tropical storm Fay; lots of needed rain without hurricane force winds.

As I write this message, Gary and I are getting our plants ready to take to the Bromeliad Extravaganza for sale in Tampa on August 29-30. And as you read this, the Extravaganza will be history. Hope several of our members were able to attend. These once a year events have certainly evolved in the past years to become almost mini World Bromeliad Conferences. Several great speakers well known in their field of expertise give relevant programs; there are tours of local gardens featuring bromeliads. On Saturday, besides the raffles and seminars, there is always a bromeliad sale as large if not larger than any other in the United States. In the evening there is a Banquet and an exciting and fast moving Rare Plant Auction that benefits FCBS activities. Also it is always nice to visit with friends that also have the Bromeliad fever. The organizers arrange for cheaper hotel rooms and make it easy to sell your extra plants to help pay for your expenses. So if you didn't make it up to Tampa this year, you have the opportunity next year to experience it all again in Orlando.

We are starting the wheels turning for our next CBS sale, scheduled for December 6th and 7th. Time seems to pass so quickly these days. Next thing you know our Sale will be here. Please say yes if you are asked to help with a job to keep our Sale on track. This is not a show year so hopefully it won't be as stressful for everyone. So if you are thinking of selling at our Sale it is time to consider which plants and items you will bring. Watch for more information at our meetings and in the Meristem.

We had a Great Workshop on Cryptanthus in August. Steve Hoppin, the President of the Cryptanthus Society had some very unusual colored, patterned and shaped Cryptanthus hybrids from a variety of hybridizers to show us. I also have developed a fondness for them myself. For more information consider joining the Cryptanthus Society.

Gary and I were not able to attend this year's World Conference. It was GREAT to have such a good speaker and photographer such as Jay Thurrott for this month's program to talk about it.

I want to say THANK-YOU to everyone who contributes their time to make this Society a GREAT success. And be careful out in this heat while attending to your gardens; the temperature is still pretty hot out there and it can sneak up on you very quickly.

Donna Schneider, CBS President

Summer Workshops & Programs

I'm sorry that I was not here to enjoy the Workshops and Feature Programs given by our members and guest speakers. I add my thanks along with the appreciation of our membership to those who volunteered their time and gave of their knowledge. Please refer to the Meeting Minutes published elsewhere in this issue for additional information about these programs and speakers.

August Program



Just a week before the August meeting, due to a conflict of obligations, our August speaker convinced Jay Thurrott to switch with her and give us a program at the August CBS meeting.

Jay comes to us from Port Orange, where he is the Manager of Utilities for the City of Dayton Beach. Jay has been involved with bromeliads for many years and grows many of the genera. His favorites are probably the vrieseas, although those of his plants I have seen at shows and in pictures, regardless of the genus, are grown extremely well.

Jay has the same problem many of us have...he just can't say no! Besides holding the offices of President, Vice-President and Secretary of his home society, the East Florida Bromeliad Society, he is their current newsletter Editor. Likewise he has been President, V.P. and Secretary of the Florida Council of Bromeliad Societies. He has just finished a 6 year term as a Regional Director of the Bromeliad Society International and has assumed the BSI Vice-Presidential position. In this capacity he is in charge of BSI involvement with the 2010 World Bromeliad Conference to be held in New Orleans, Louisiana. He is a BSI Accredited Panel Judge and has just returned from the 2008 BSI WBC in Cairns, Australia, where he judged the WBC Show and presented a program on the "Evil Weevil". He is in constant demand as a speaker throughout the US on a variety of topics.

Jay presented us with a pictorial tour of the parts of New Zealand and Australia, which he and Calandra, his wife, visited prior to the Conference as well as highlights of the 2008 WBC in Cairns.

Many thanks go to Jay and Calandra for agreeing to visit us and sharing their "adventure" on such short notice.

September Speaker

"Growing the Jewels of the New World" will be **Terrie Bert's** program. Terrie tells us - "In this presentation, I talk about the types of plants in 8 commonly grown bromeliad genera (*Aechmea*, *Billbergia*, *Cryptanthus*, *Dyckia*, *Guzmania*, *Neoregelia*, *Tillandsia*, *Vriesea*). For each genus, I review their natural distributions and habitats and growing conditions. Then I describe how they can be grown outdoors, give tips on their propagation, and provide information on how to deal

with common bromeliad pests.

Terrie is an accomplished research scientist for the Florida Fish and Wildlife Conservation Commission. She has been an active member of the CBS since 1997, the SBS since 1988 and the FCBS, where she has held all executive offices. Besides being a Director of the BSI she has served on BSI Standing Committees and is currently the Affiliates Show Chair. She is a Master BSI Accredited Judge as well as an excellent grower and exhibitor of her vast collection of plants, of which she favors the species plants.

The CBS Fall Bromeliad Sale

The CBS Board of Directors and Sale's Chairs met the last weekend of August to discuss details for our Fall Sale. Due to changes of the grounds' landscaping at Terry Park, organizers are needing to alter the way we handle traffic flow through the sales areas. This is a non-Show year so we will not have the large outdoor sales' tent, but rather use the inside hall for vendors. This will limit space and the number of tables usually available. Brian Weber, Sales' Chair believes he has been contacted by all of the vendors who plan on selling.

Next month, Sales' Rules, Chairs and additional information will be published in the Meristem; however, the following is the important basic information we all need to be aware of. -

If you are unsure if Brian has your request to sell or you might have special needs (namely you plan on selling very large plants, which we may have to limit within the building), contact him by e-mail or phone ASAP. (His contact info is on the inside front page.)

In order to sell you must attend 2 meetings during 2008 and be a paid-up member in good standings. (Only the Sept, Oct and Nov meetings remain. Betty Ann Prevatt has the records of attendance.)

Brian Weber is currently in the process of contacting members and asking them to volunteer to serve as Committee Chairs and assistants. Please offer your time and skills if asked. All assistance to make this Sale a success is appreciated.

Hours of SETUP on Friday night Dec. 5th and Saturday morning Dec. 6th will be announced at the September meeting. As in past years the official times when the Sale is open to the public is Saturday 9AM to 5PM and Sunday 10AM to 4PM.

Bromeliad Expose By Larry Giroux

This has been the worst year as far as I can recall for snails. The snails have been larger and more aggressive in eating our collection, including Steve's new hybrid seedlings. A few years ago I wrote an article for the "Consultation with Dr. Larry" column in the *Cryptanthus Society Journal* of which I am the Editor. I'm reprinting that article here to give our readers some insight into the problem and solutions to this type of infestation. Although this article specifically refers to the effect of snails on cryptanthus, the information is relevant to most softer leaf plants.

Consultation with Dr. Larry

By Lawrence J. Giroux, M.D.

Dear Dr. Larry:

Other than occasionally ingesting them with a large portion of melted butter, I do not like snails. It seems that this last growing season was exceptionally bad for snails in my garden and shadehouse. The softer leaves and new growth of my cryptanthus, especially *Cryptanthus beuckeri* and its hybrids, seemed to be especially hard hit. Any suggestions?

Dear Gastropod Connoisseur:

You are far from being alone in your distaste for snails in your garden rather than on your plate. Granted that these little creatures are minimally bothersome with their choice of food items in the garden and that our cryptanthus are in no real danger of being killed, when the damage occurs to newly sprouted seedlings, to the new growth of a newly acquired plant or a prized cryptanthus being groomed for show, battle lines need to be established.

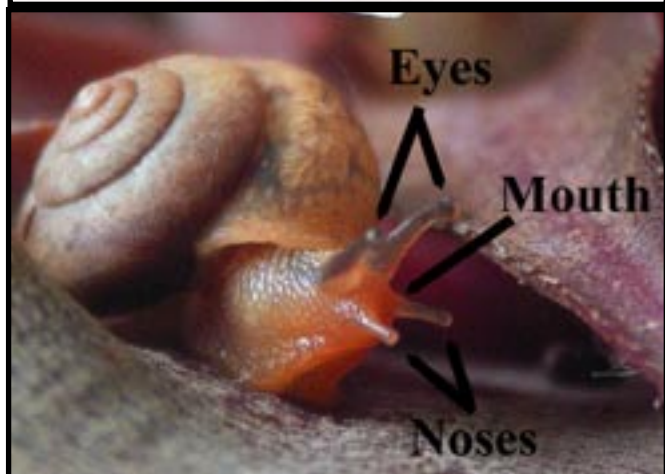
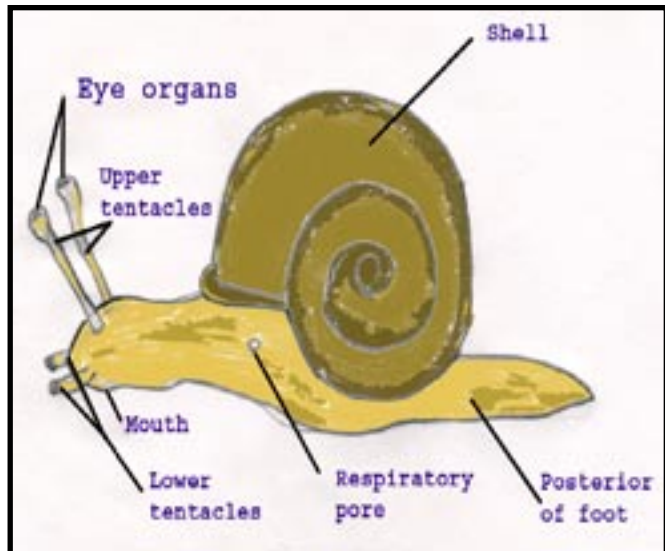
As in other situations, you never want to make a solution worse than the problem. In my research of the benefits of snails, these guys have little going for them. Some species of snails may have medicinal benefits in the treatment of pain, cancer and other health problems. Of course escargot still remains a delicacy up there with caviar and French wines. Interestingly it was this love of snails in a butter sauce, which led to the infestation of the Brown Garden Snail in California. Snails' indiscriminate appetite, i.e. for both fresh and decaying Horticultural materials, places it in the group of other creatures like earthworms which process these wastes into soil, an obvious benefit to our gardens. There is a group of die-hard shell collectors who prize marine, fresh water and many of the terrestrial snail shells. I don't think the common garden snails' shells are of a great value to them. And unfortunately for the garden snail, they are not the favorite for pet lovers. And like all of God's creations, the snail is part of the food chain, albeit someone low down. So knowing this and having the availability of a good French restaurant, I have no reservations about eradicating these pests from our Cryptanthus.

There are thousands of snails species, which range in size from a very minuscule to the giant African snail which may have eggs the size of chestnuts. In our collections we are most concerned with the garden snail. There are now



Pictured to the left is a snail leaving its signature slime path, which identifies their presents in your garden. Look closely and you will note that the leaf is denuded of its scurf along the snail's eaten swarth. Photo by Larry Giroux.

The generalized drawing shows the major parts of a typical snail. A slug has basically the same anatomy without a shell. Many of the internal organs are located in the part of the body that protrudes into the shell providing protection. The photo clearly shows the head and head organs in a living creature. Drawing and photo by Larry Giroux.



Typical cryptanthus damage by snails and slugs is demonstrated here. The first photo shows a soft leaved, newly developed offset of *Cryptanthus beuckeri* with leaves half eaten. Snails seem to have a preference for this species and their hybrids. The second picture shows holes and ragged edges where snails have eaten through the thickness of the leaf and inward from the borders. The exposed eaten edges pose additional harm to your plants such as infestation by virus and fungus. The last of this group of photos demonstrates a snail enjoying its favorite parts of the plant, the petals, both new and day old flowers are fodder for these pests. Although they also provide beneficial service by ingesting decaying plant material, their preference for new tender leaves labels them as pests in my collection. Photos by Larry Giroux.



numerous types of this pest ubiquitous throughout the world. Most of the ones we see on our plants are a few millimeters to one inch in size. The anatomy of these slimy creatures is all about the same. The enclosed drawing demonstrates the calcified shell; the body with a posterior foot; and a head, which has two sets of tentacles. Both sets are used for feeling the snails way and objects in its path. In addition, the upper tentacles are eyestalks with eye organs and “nostrils” for smell, at their tips. The lower set also has “nostrils” for smell, which is remarkably keen. Both sets of tentacles are retractable. They breath through respiratory pores on both sides of their body. Snails and slugs have pretty much the same anatomy. Of course slugs do not have shells and lack a body hump (called the tortillon), which protrudes into the shell and allows the attachment of the shell to the snail’s body. It is within this hump that the majority of the organs are located; whereas in the slug these organs are not protected by the shell. Just behind the lower tentacles is the mouth opening. The damage that snails and slugs produce to our plants is caused by a small organ within the mouth called the radula. This is a type of tongue composed of minute hooks by which the snail or slug tears apart and swallows the plant tissue.

Snails are hermaphroditic, meaning that they have both sex organs and have the capabilities of mating with whatever other snail they come in contact with. Fortunately it takes approximately two years for them to mature, before they can mate and lay eggs. Slugs mature much more quickly and can mate in three to six months after hatching. The terrestrial garden snails lay their eggs by digging down into the soil and depositing about 80 eggs into a “nest”. After about two to four weeks, the eggs hatch and move to the surface along a tube created by the mother when she made the nest.

Snails and slugs if they have a choice, prefer to feed on living, succulent foliage and flowers. This is the reason that cryptanthus leaves and flowers as well as new seedlings sustain the greatest damage in our garden. (See enclosed photos.) Although their vision may not be the best, they have a very keen sense of smell. As an experiment I place a snail on a glass top table with a potted cryptanthus about 4 inches away. I was amazed by how fast he detected the moist soil, headed directly for the pot and proceeded to climb the side. He climbed over the edge, across the soil and on to a leaf in a matter of minutes.

Control:

Since where ever you are growing your cryptanthus, you are probably maintaining a temperature of 50 to 60 degrees F minimum as well as a moist environment. Control of snails and slugs will therefore be a year round duty.

.Snails and slugs prefer to eat during the night and seek out damp and darkened spots to rest during the day such as under a piece of wood, under a clay or plastic pot or the underside of a leaf. You can take advantage of this habit and set out the above items around your plants. During the evening hours, you can check these traps and destroy any of the sleeping critters. Since maturity takes so long with snails, diligently picking off those snails you see on a daily basis will diminish the population to a tolerable level. This will work well if you have a limited collection of plants. For those of us who have larger collections, this approach is not as feasible.

I have found many, many websites devoted to accumulating ways of

eliminating snails and slugs, contributed by gardeners throughout the world. A few of their ideas are the following.

1. Snails and slugs are attracted to fermented products such as beer or sugar-water and yeast combinations. These can be created on your own or acquired commercially. It is important to remember that these work only within a limited radius, they need to be accessible to the snail and slug, the liquid must be deep enough to drown the pest and must be changed regularly to keep them fresh.

2. There are a variety of barriers, which can be put around your plants to deter snails from approaching your cryptanthus. Copper appears to shock snails; so a metallic strip of copper metal around or a painted surface of copper sulfate beneath your plants may prevent access. Of course it is recommended that copper products be kept away from bromeliads in general and cryptanthus specifically. Since snails and slugs hate to crawl across a rough or sharp surface due to tears in their under parts resulting in dehydration from excess mucus production, barriers of diatomaceous earth or crushed shells or small metal fences with their exposed sharp wires, erected around your plants, may keep them away. A salt ring has been suggested, but caution must be used to avoid excessive exposure of the salt to the plants from runoff, besides replacement after irrigation.

3. Snails and slugs have numerous natural enemies. It seems we are not the only ones who like to eat them. Reptiles such as lizards, frogs, toads and snakes, large insects and birds will devour them shell and all. Particularly effective are ducks, geese and chickens. For most of us these hungry creatures around our plants are not viable alternatives to the infestation of snails.

4. Other suggested remedies have included a solution of ground up dead snails and slugs sprayed around your plants. Mixing water and garlic in a food processor, straining the mixture and using it as a spray on your plants. Sliced cucumbers or potatoes will attract snails and slugs and then you simply pick them off and destroy them. Spraying your plants with a salt solution may work, but I'm sure the concentration is extremely critical to avoid damage of plants. Coffee and tea grounds spread on the surface of the soil will not only affect the feeding snails and slugs, but the effective chemical (presumably caffeine) will reach eggs beneath the surface. Placing your plants on sandpaper may act as a barrier and keep the snails from reaching the pots. The list actually goes on and on.

5. For the grower who has a small greenhouse, shadehouse or grows their plants under lights indoors, I'm sure you can get by with one of the suggestions listed above. For the rest of us, if we're serious about eradicating or at least significantly reducing snails and slugs from our collection of cryptanthus, then we may need to resort to a combination of baiting and the use of techniques already mentioned. Baits containing the active ingredient metaldehyde, in tablet or pellet forms, have been the mainstay of treating snail and slug infestation. Unfortunately the toxicity of this chemical extends beyond killing only snails and slugs. Cats, dogs and other pets are equally susceptible to this drug. Bait stations not accessible to animals can be made or purchased, which will allow you to use this chemical in a safer manner. More recently another chemical, iron phosphate, which when ingested in even small quantities causes snails and slugs to stop feeding and die, has become available. It is relatively harmless to wildlife, children or pets. It can be used in bait stations or simply spread around the base of your plants. This formulation

I was amazed by the speed and accuracy of this snail shown climbing over the lip of a pot of cryptanthus, when it was placed on the table 4 inches away from the pot. One deterrent suggested in the literature to keep snails and slugs from reaching the plant is a barrier of copper. Copper wire stripped of its insulation could be looped around the pot, avoiding exposure to the cryptanthus leaves. For those with fewer plants, try using copper foil found at stained glass stores. It



comes in different widths and has a sticky side to adhere to the pot. You need to provide an entire border around the pot. It is believed that the snails receive an electric shock when they try to cross the copper. Photo by Larry Giroux.

is available under many trade names including Sluggo and Escar-Go. To get the full benefit of any bait, the timing of its application is important. Generally snails are less active during the very dry, the very hot and cold times of the day or year. Application of the bait on a warm, humid evening or after watering is optimal for catching snails and slugs during their feeding hours.

Sometime, try entering “snails or slugs” into your Google search engine and go to some of the sites dealing with eradication of snails. It’s just fortunate that the Humane Society or the SPCA don’t enforce their rules when it comes to snails and slugs. There are a lot of closeted sadists out there who get their jollies from torturing these helpless creatures. I loved the account of one writer of a letter describing how he covered a slug with salt and watched it turn into a pool of slime. I shouldn’t be one to talk...although it won’t regrow those new leaves in the center of that show groomed *Cryptanthus beuckeri*, which were devoured by snails, squeezing that sucker between my fingers felt soooo good!

Guilty as anyone,

Dr. Larry

Photos from the 2008 Cairns'

In the first photo Steve Hoppin and Larry Giroux posse with Grace Goode. The 91 year old Ms. Goode received the Wally Berg Award of Excellence for her contribution to the bromeliad world through her educational and hybridizing efforts. Steve was Co-Chair of the Judges and Larry was the Co-Chair of the BSI Show as well as giving a program to the delegates.



During a break in judging, CBS member, Terrie Bert is seen talking to Ed Doherty, BSI Treasurer and Dr. Jose Donarye, from Hollywood, Fl. is conversing with an Australian judge.



Michael Kiehl is standing next Sara Donayre of Hollywood, Fl. The two Australians are Sheryl Waite and Shane Zaghini, bromeliad hybridizer and author of the book, *Bromeliads, A Guide to the Beautiful Neoregelias*.



Dale Kammerlohr is enjoying the company of two of the hundreds of Aussies who attended the Conference. Photos by Larry Giroux





CBS member Jim Pearce takes a rest in front of one of the numerous exhibits setup by Australian Bromeliad Societies and nurseries. The exhibit seen here was by Dandaloo Valley Nursery, owned by Nigel Tompson; he won the Commercial Sweepstakes Award.

I was able to catch a candid shot of Calandra and Jay Thurrott who were in Cairns from Port Orange, Fl. with their daughter. Jay gave the CBS a program on the WBC at our August meeting. He also gave a program about the “Evil Weevil” at the WBC.

Other Floridians and CBS members attending the Conference not caught on film included Eloise Beach and Donna Kiehl.

Below are Headtable winners. The last photo is one of the mini-artistic arrangements entered by Larry Giroux. Since plant materials could not be brought into Australia for the Show, individuals and the Cairns Bromeliad Society donated live materials so that overseas attendees could create artistic designs and be part of the Show. Many travelers took advantage of this opportunity. Also filling in the spaces are photos of a sampling of some of the other plants in the Show.

Photos by Larry Giroux.





Neoregelia
'Kahala Dawn'



Dyckia **'Warren'**



Various inflorescence entries



Vriesea
'White Windows'



Below is a photo submitted by Lyle Bowen of a first time blooming of his *Tillandsia capitata* 'Yellow' at his South Fort



CBS May, June, July & Aug Meeting Minutes

DATE: Sunday, May 18, 2008. **LOCATION:** St. John the Apostle Metropolitan Church, Fort Myers, Florida. **ATTENDANCE:** 32 members. We welcomed guests Judy and Dave Brzoska from Naples who then joined as members!. **CALL TO ORDER:** President Donna Schneider called the meeting to order at 2:20. She reminded us to please come early and help set up the room.. **READING OF MINUTES:** Waived. **OLD BUSINESS:** We need 3 persons to aid in the set up of the audio/visual equipment. Larry is in great need of an assistant to help with the newsletter. We need a person to be in charge of setting up the room.. **NEW BUSINESS:** We received a thank-you for the \$1850.00 donation to the Mexican weevil program which is greatly appreciated. There will be a suggestion box at all the meetings starting today. They can be any ideas from programs, trips to classes. Any and all information is helpful. **COMMITTEE REPORTS:** New books in the library. Larry covered us on the 2008 Bromeliad Extravaganza at Tampa to be held August 29-31. **ANNOUNCEMENTS:** Betty Ann told of the deaths of Kay Cude, Jim Roussey and Oscar Hoffman. Punta Gorda is having a Hibiscus festival on Fri/Sat., 6/13 & 6/14 at Gilchrist Park. Respectfully submitted by: Mary Scofic.

DATE: Sunday, June 15, 2008. **LOCATION:** St. John the Apostle Metropolitan Church, Fort Myers, Florida. **ATTENDANCE:** 26 Members. **WORKSHOP:** Betty Ann Prevatt and Eleanor Kinzie presented the workshop on mounting bromeliads on wood, in shells, in a bird cage, slatted containers and other interesting ways using common items you find around the house. Very clever, those two! **CALL TO ORDER:** 2:00 PM by Ross Griffith. **MINUTES:** Waived. **OLD BUSINESS:** Betty Ann talked about the EXTRAVAGANZA to be held August 30 in Tampa. A bus will be chartered if enough members let Betty Ann know they are interested in going. **NEW BUSINESS:** None. **COMMITTEE REPORTS:** None. **ANNOUNCEMENTS:** None. **DOOR PRIZE:** Conducted by Ross, Neoregelia Luna was donated by Barbara Johnson and won by Eleanor Kinzie. **SHOW & TELL:** Conducted by Dale Kammerlohr. Included in his presentation, Dale brought in a 4 long inflorescence from a hybrid that had bloomed a year ago and it still had color! **REFRESHMENT:** Provided and served by Mary McKenzie and assisted by librarian, Sue Gordon. As usual, wonderful! **PROGRAM:** Ross introduced our guest speaker, who is also a fellow member, Dennis Giardina. He presented a wonderful slide show of his trip with Dr. Frank about the weevil in the Fakahatchee State Park. It was easy to see that he shares his love of plants with love of insects and the Florida panther. **RAFFLE:** Commentary by Dale, assisted by Ross and Betty Ann. **ADJOURNMENT:** 4:45 PM, approximately. Respectfully submitted by: Luli Westra, Secretary

DATE: Sunday, July 20, 2008. **LOCATION:** St. John the Apostle Metropolitan Church, Fort Myers, Florida. **ATTENDANCE:** 38 members. **WORKSHOP:** Excellent workshop by Bruce McAlpin, "How to Correctly Name and Label Your Bromeliads". December is not that far away! **CALL TO ORDER:** Ross opened the meeting at 2:05 PM. **MINUTES:** Waived. **OLD BUSINESS:** None.

NEW BUSINESS: Betty Ann said only 6 people responded to her e-mail about taking a bus to the Extravaganza in August. That is not enough. The bus costs \$850.00. Passenger .costs range between \$17.00 and \$35.00. The bus would meet at the church, leave at 8:00 AM and return at 6:00 PM. She may ask the orchid club to join us in order to meet a passenger quota. **COMMITTEE REPORTS:** Vicky Chirside reported taking a tour of the accommodations and facilities at the upcoming Extravaganza in Tampa. It looks very nice with wonderful home garden tours and lots of interesting speakers. She reported the next Extravaganza will be in Orlando; with the next World Bromeliad Conference in New Orleans in 2010. Vicky inquired if there was anyone interested in Judges' School. Fifteen would be needed from around the state. They would collect names until the list reached at least 15. She said there had been much talk on weevil research. Lastly, she reported that the Florida Council Photos are being used by someone to sell plants. This person is going by the name Jack or John Lewis. These photos are copyrighted. That is a no-no. **ANNOUNCEMENTS:** Extravaganza Garden Tours info sheets were on the head table for anyone interested. Remembering KAY CUDE: There would be a Celebration of Life memorial at ECHO to be held July 28th at 11:00 AM. Sue Gordon announced there is a new book in the library, "Bromeliads". It has absolutely beautiful color pictures! **DOOR PRIZE:** A basket with a "medley" of bromeliads, donated by Betty Ann Prevatt, won by Judy Dugan. **SHOW & TELL:** Conducted by Dale Kammerlohr. **REFRESHMENTS:** Mary McKenzie, assisted by Sue Gordon. It couldn't get any better than this! **PROGRAM:** By Jason Mellica, grower, hybridizer and CBS member. His slide show entitled "My adventures in the Guyana and Venezuelan Rainforest" spanned 10 years of his trips into the tropical rainforests, where he traveled from the lowlands where people lived in crudely made stilt houses to the mountainous regions of Guyana with huge waterfalls in the background. He showed more animals than I can name. Jason has a way with words - very entertaining and informative is all I can say! **RAFFLE:** Run by Dale and assisted by Ross Griffith, Dolly Dalton and Mary Scofic. **ADJOURNMENT:** Meeting was adjourned by Ross at 4:12 PM. Respectfully submitted by: Luli Westra, Secretary

DATE: Sunday, August 17, 2008. **LOCATION:** St. John the Apostle Metropolitan Church. **ATTENDANCE:** 31 members. **WORKSHOP:** 1:15 PM "Interesting and New Cryptanthus" by Steve Hoppin. Steve showed some of his own hybridized crypts, newer hybrids from other US hybridizers and some he and Larry had acquired from Thailand. **CALL TO ORDER:** Donna Schneider opened the meeting at 2:00 PM with a big "Welcome" to everyone. She asked the membership to remember to turn their cell phones off as a courtesy to our speaker. Donna had a few more requests. Namely for a few volunteers to help set up the room for the meeting, and also a volunteer to set up the audio visual equipment. Larry also could use some help with the newsletter. With so many members, sharing these duties would really help! **MINUTES:** The minutes will be in the next newsletter. **OLD BUSINESS:** None. **NEW BUSINESS:** Betty Ann Prevatt announced that the Treasurer's Report was available on the head table. She also announced that only seven people signed up for the bus trip to the Extravaganza which was not enough to charter the bus, so people wanting to attend can get together and carpool. Larry Giroux said the Florida Council is requesting each society donate five plants or bromeliad related items for the "Rare Plant Auction" at the Extravaganza from its membership. Steve Hoppin said he and Larry would take those plants to Tampa, the weekend of August 29-31. **COMMITTEE REPORTS:** None. **ANNOUNCEMENTS:**

Donna announced that the Tropic Fruit Market on Pine Island is open. She and Gary have a booth. No suggestions have been dropped in the "Suggestion Box" on the head table. Good news, I guess, but please use it. New ideas are always welcome! Steve said next month's workshop speaker will not be available; we need a volunteer or two. **DOOR PRIZE:** Sue Gordon donated a handsome Neo. Aztec and Dennis and Linda Cathcart donated eight "Beginners Guide to Successfully Grow Tillandsias" booklets. Winners include Mary McKenzie, John Banta, Eloise Beach, Dolly Dalton, Terri Lazar, Barbara Johnson, Jay Thurrott, Dale Kammerlohr and Steve Hoppin. **SHOW & TELL:** Dale Kammerlohr conducted Show & Tell. There was a beautiful variety - some huge plants he hybridized himself among many others. **REFRESHMENTS:** Mary McKenzie assisted by Sue Gordon and Barbara Johnson set up a great table with everyone's goodies. Thank you all! **PROGRAM:** Jay Thurrott, the Florida East Coast editor, with his wife, Calandra, from Port Orange presented a slide show of their trip to the World Conference in Cairns, Australia, June 2008. They traveled from Florida to Los Angeles to New Zealand to Australia, touring many cities and towns along the way. They showed many wonderful pictures of the countryside, wildlife (from land, sea and air), local flora, botanical gardens and bromeliads everywhere! It sure felt like you were there - what a great trip! **RAFFLE:** Conducted by Larry, Dolly, Ross and Sue. **ADJOURNMENT:** Closed by Donna at 5:00 PM Respectfully submitted by: Luli Westra, Secretary

EVENTS CALENDER

Tropical Plant Bazaar
@ Eco Park, Cape Coral
Saturday, October 18th 9-2pm

**SW Florida
Yard and Garden Show**

Saturday October 25 – 9 a.m. to 4 p.m

Sunday October 26 – 10 a.m. to 3 p.m.

**Collier County University Extension Office
14700 Immokalee Road Naples, FL
(10 miles East of I-75)**

The CBS Fall Bromeliad Sale

There will be nearly 20 vendors from around the state and thousands of bromeliads for sale.

**Terry Park, Fort Myers Florida
3410 Palm Beach Blvd.**

Sat. Dec 6th 9AM to 5PM & Sun. Dec 7th 10AM to 4PM



CALOOSAHATCHEE BROMELIAD SOCIETY
3836 HIDDEN ACRES CIRCLE N
NORTH FORT MYERS, FL 33903
E-MAIL - DRLARRY@COMCAST.NET



*Morris Henry Hobbs Award for Best Artistic Entry
Artistic Arrangement - "The Outback"*

Neoregelia 'Red Waif' & 'Chiquita Linda' on wood Exhibitor- Pat Coutts

Enjoy the expanded, full color Meristem at www.fcbs.org
or contact your Editor and have it e-mailed directly to
you.