



**CALOOSAHATCHEE
BROMELIAD
SOCIETYs
CALOOSAHATCHEE
MERISTEM**

3836 Hidden Acres Circle N
North Fort Myers Fl 33903
(239) 997-2237

DrLarry@COMCAST.NET

February 2009



CALOOSAHATCHEE BROMELIAD SOCIETY OFFICERS

EXECUTIVE COMMITTEE

PRESIDENT Donna Schneider (sgarydonna@aol.com)
VICE-PRESIDENT Ross Griffith
SECRETARY Luli Westra (lulidave@yahoo.com)
TREASURER Betty Ann Prevatt (bprevattpcc@aol.com)
PAST-PRESIDENT Steve Hoppin (steveandlarry@comcast.net)

STANDING COMMITTEES CHAIRPERSONS

NEWSLETTER EDITOR Larry Giroux (DrLarry@comcast.net)
FALL SALES CHAIR Brian Weber (BrianWeber1b@aol.com)
FALL SHOW CHAIR Ross Griffith
FALL SHOW Co-CHAIR Betty Ann Prevatt (bprevattpcc@aol.com)
PROGRAM CHAIRPERSON Bruce McAlpin
WORKSHOP CHAIRPERSON Steve Hoppin (steveandlarry@comcast.net)
SPECIAL PROJECTS Gail Daneman (bob@fesq.net)
CBS FCBS Rep. Vicky Chirnside (vickychirn@aol.com)
CBS FCBS Rep. Debbie Booker/Tom Foley (tefoley24@gmail.com)

OTHER COMMITTEES

AUDIO/VISUAL SETUP Bob Lura, Terri Lazar and Vicki Chirnside
DOOR PRIZE Terri Lazar
(terriLML@earthlink.net)
HOSPITALITY Mary McKenzie ; Sue Gordon
SPECIAL HOSPITALITY Betsy Burdette (betsy@burdetteinc.com)
RAFFLE TICKETS Greeter/Membership table volunteers - Dolly Dalton, Eleanor Kinzie, etc.
RAFFLE COMMENTARY Larry Giroux
GREETERS/ATTENDENCE Betty Ann Prevatt, Dolly Dalton (dollyd@comcast.net),
Luli Westra
SHOW & TELL Dale Kammerlohr 863-676108 (dzdase@mbrqmail.com)
FM-LEE GARDEN COUNCIL Mary McKenzie
LIBRARIAN Sue Gordon
ASSISTANT LIBRARIAN Kay Janssen

The opinions expressed in the Meristem are those of the authors. They do not necessarily represent the views of the Editor or the official policy of CBS. Permission to reprint is granted with acknowledgement. Original art work remains the property of the artist and special permission may be needed for reproduction.

This slide on the front cover from John Banta is labelled Slhura Chief. Presumably he is from the Brazilian jungles, but you'll have to ask John about the story of this colorful fellow. The back page shows another of John's slides of *Aechmea nidularioides*, probably in habitat.



THE CALOOSAHATCHEE BROMELIAD SOCIETY

MEETING TIME AND PLACE:

February Meeting Sunday February 15th 2009
ST. JOHN the APOSTLE CHURCH 3049 McGREGOR Ave. FT. MYERS.
DOORS WILL BE OPEN AT 12:30 FOR SETUP.

MEMBERSHIP SALES WILL BE PERMITTED

at the **February Meeting**.

Friendship plants, Raffle items are always welcome.
There will be a Door Prize and Show and Tell

The schedule for the February Caloosahatchee Bromeliad Society meeting will be slightly changed to accommodate the length of the program given by our speaker.

1:15 PM – In lieu of the Workshop, we will have the Show and Tell presented by Dale Kammerlohr at an earlier time in the workshop area. We ask all members who will be bringing plants for the Show and Tell to bring them directly to the workshop area on their arrival.

2:00 PM -the regular business meeting will be opened by Donna Schneider, CBS President; followed by the raffle of the door prize. Immediately following the business meeting, we will have our normal short refreshment break.

Following the break, John Banta will give his presentation entitled –"Those Were the Days". Using a large number of select slides from his collection, John will recall his adventures with bromeliads, bromeliad personalities and some of the "oldies but goodies" bromeliads. I can tell you that based on my interview with John, he has many interesting and colorful stories to share with us. Check out "Bromeliad Expose" in this issue.

The rest of the meeting will remain unchanged.

The Caloosahatchee Bromeliad Society is an active Affililate of:



FM-LCGC



Cryptanthus
Society



Bromeliad Society
International



FCBS

Society News

Editor's Note

On February 14, 2009 at 9:00 AM members of the Caloosahatchee Bromeliad Society will be meeting on the grounds of the new Lee County Fort Myers Garden Council building to install our portion of the gardens. I believe that on February 27th, the long awaited grand opening of the building and grounds will finally be realized. So, it is important that we complete our area of the property.

There has been lots of controversy over the selection of the Virginia Avenue location for the new Garden Council building. The old Cleveland Avenue building in front of Lee Memorial Hospital, which has long since been demolished, had served the 31 plant society members of the Council well until Lee Memorial requested the location for a parking lot. The income from the sale of the building, went to purchase and renovate the new Virginia Avenue building and property. It is unfortunate that the larger societies, which gave the council the most support, no longer has meeting space due to the diminished size of the new building. Currently, even members of the smaller affiliate societies will have problems legally parking due to the limited number of parking spaces allocated, although this problem is been addressed. This paucity of spaces also limits the new location for plant sales and other plant related events.

Putting aside political issues and resentment, the Caloosahatchee Bromeliad Society should put a good face forward to the community and landscape the portions of the grounds allocated to us at the new Garden Council building. Garden Club Section 3 (see diagram) is a large area with three sides fenced, consisting of both sun soaked and shaded planting areas. The current site calls for a large horseshoe shaped area with a path running through it. Depending upon the size of the plants, I see the need for several dozen sun loving and partial shade bromeliads. The council will provide a minimal backdrop of bougainvilleas (again refer to the drawing).

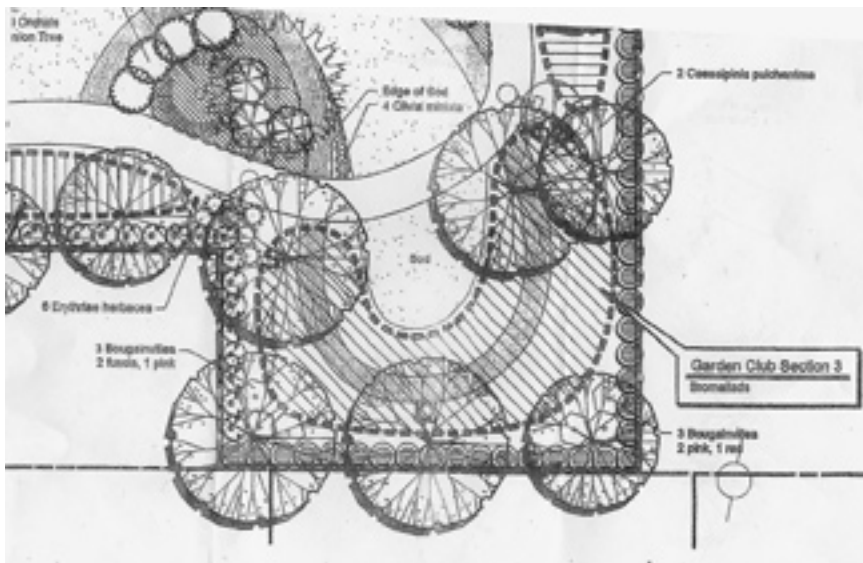
Please provide help to Mary McKenzie and David and Geri Prall, who have already volunteered to give of their time and plants for this new Bromeliad garden. Please show up on the date and at the location listed below with bromeliads and ideas for creating a Bromeliad showcase.

Date: February 14, 2009

Time: 9:00 AM

**Place: The Fort Myers Lee County Garden Council building
Virginia Avenue (Go east off of McGregor Blvd.) Virginia
Ave. is 2 blocks South of Victoria and 2 blocks North of the
Edison Home).**

Hope to see many of you there to support your Society and Community.



Condolences to the Schneiders

Recently, Donna Schneider received news of the passing of her father. Please join me in sending Donna and her family heart felt condolences and prayers.

Notice of Dues

There are still about 20% of our members who have not renewed their membership. Please contact Betty Ann Prevatt; I know she has been trying to contact you.

(Please note that new members who joined at the October or November meetings in 2008, do not have to pay dues for 2009. Their next renewal will be in January 2010.)

January Program



Harry Luther, the Director of the Mulford B. Foster Bromeliad Identification Center (BIC) and the Curator of the Living Collection at Marie Selby Botanical Gardens reviewed many of the bromeliads of Brazil as well as the habitats from which they came. I used the past tense here because Harry told us that since the coastal and rainforest areas are undergoing re-assignment, particularly for the production of ethanol, many of the specific habitats are going, going, gone!

It has been several years since we have had Harry speak to us at our meeting, it was nice to hear and see him again giving us of his vast knowledge. Harry, thanks for all you do for the Bromeliad world.

January Workshop

We need to thank Steve Hoppin and all of those who volunteered helpful hints and tricks about how to tend to and grow their plants at the Workshop. It is always great to learn about how others grow their bromeliads and how we can do it better.

A Theme/Name for Our 2009 Show and Sale

I was disappointed that there was little interest at the meeting for the naming and theme of our December Show. We still need a name, which will be suggestive of a theme; which the organizers can incorporate into decorations, head table, awards and advertisements.

Fortunately two years ago several very appropriate names were submitted by our membership. As you will recall the winning name was “**Color My World with Bromeliads**”.

Since there were no new submissions, previous names will be submitted to the Board to make a decision. If you would like to lobby for any particular selection, please let a Board member know.

Bromeliad Peddler - Regressing to an Olde World Village, we can work with the traditional street flower sellers and their carts.

My Secret Garden of Bromeliads - This would not use the ideas (women’s sexual fantasies) from the book: My Secret Garden by Nancy Friday, but rather the general theme of “the special, secluded and relaxing garden of contemplation”.

Harry Potter and the Magic of Bromeliads - If we can legally use the name “Harry Potter”, we can build our theme around Magic, Wizardry and images from the “Potter” movies. (An alternate name that would be safe would be **The Wizard and the Magic of Bromeliads or Wizardry and Magic of Bromeliads**.)

Temple of Bromeliads - Using either Mayan or Egyptian temple imagery for example, we can select interesting decorations and awards.

Bromeliad Castaways - Using a tropical island backdrop would allow the use of beach and tropical props, very apropos to bromeliads.

Rock n’ Roll with Bromeliads - This will take us back to the memories of the ‘50s.

A Galaxy of Bromeliads - The stars, the planets, aliens, there is no end to it...

The Bromeliad Bowl - Our sale is in the middle of football season. We can incorporate bromeliad into the gridiron scene.

Local Bromeliad Events

Thursday February 12, 2009 10AM

Dennis Cathcart on Bromeliads

Elks Club Radio Road Naples Call Carol Sweat for more info.

Saturday February 14, 2009 9AM

Installation of Bromeliad Garden at the FtMLCGC Building

Virginia Ave Fort Myers, Fl

For more information see article on previous pages or call Mary McKenzie

Saturday February 21, 2009 9AM-4PM

GARDEN GALA hosted by PI Garden Club

Pine Island Nature Park- 1 block North of PI center.

Call Donna Schneider for details or see the full poster in the e-mail version of this newsletter at www.fcbs.org

Saturday March 7, 2009 9AM-2PM

Tropical Plant Bazaar at Four Mile Cove /Eco Preserve Cape Coral

See full poster in e-mail version of Meristem

March 12, 2009 7PM-9PM (Preview Party-Paid Admission)

March 13, 2009 9AM-5PM (Free to the public)

“Newspaper Capers”- A Standard Flower Show hosted by the FtMLCGC

Edison State College 8099 College Pky Bldg S, Rms 106-107, Ft Myers

For complete entry rules and contact information see the full brochure in the e-mail version of this newsletter at www.fcbs.org

Bromeliad Expose By Larry Giroux

Our February program will be presented by John Banta. His topic is “Those Were the Days”. John has given me this short article , which is a synopsis of his program. I have also scanned the several slides given to me by John. Don’t worry, these are extra slides to give you a preview of some of the stories, which John will entertain us with.

A Little About John Banta

By Larry Giroux

Our speaker for the February meeting is John Banta. There probably isn’t a more knowledgeable individual than John available to talk on the subject, “Those Were the Days”. Although John has only been a member of the Caloosahatchee Bromeliad Society for short while, he has been involved with horticulture for nearly 70 years. He moved to Alva in Lee County in 1976, where he tends to his impressive collection of exotic tropical plants. His favorite families of plants include Marantaceae (the Arrowroots), Zingebecae (the Gingers), Araceae (Aroids), Orchidaceae and of course Bromeliaceae, with which he has been working with for over 50 years. Although he has belonged to many of the plant organizations over the years, besides being a member of the Caloosahatchee Bromeliad Society he is currently an active member of the Tropical Fern and Exotic Plant Society and the Aroid Society.

John has been involved in many facets of horticulture. He worked as a plant inspector for the USDA, as a nursery man and as a technician in a tissue culture lab among others. During his many years in the plant field, he has worked with and met such people as Robert Read, Burle Marx and Mulford B. Foster to mention a few.



*Aechmea
luddemanniana*
'Mend'

*Guzmania
bismarckii*



Mandy Cobo

Tillandsia fendleri



*Vriesea (Alcantarea)
regina*

Pitcairnia nigra



Boat on the Amazon

Photos by John Banta

Those Were the Days

By John Banta

An old-timer looks into a personal rear-view mirror of the evolution of an interest in collecting tropical plants. “Brazil Orchid of the Tropic.” by Mulford Foster and his wife, Racine, planted the desire to visit Brazil. It took 50 years to realize that dream. The program starts with Alex Hawks collecting in Costa Rica in 1962. He founded the South Florida Bromeliad Society in 1960 along with Nat DeLeon. Alex was also instrumental in establishing The South Florida Orchid Society around 1945. A visit to Mulford’s estate “BromeLa” near Orlando in 1974 provided my first view of *Neoregelia* “Blushing Bride” That has been the progenitor of so many of our newest colorful Neo. hybrids.

The Brazilian trip ranges far from Mulford’s itinerary, but includes interesting people, neat plants and beautiful country. Then a review of one of Fred Fuch’s remarkable trips to the Amazon in 1973. Those were the days when you could arrive in Miami with burlap bags filled with orchids and all manner of botanical rarities and the agricultural inspectors would wave you through with a good natured smile. Those were the good old days!



Rio de Janiero in the good ol' days.

Photo by John Banta

It was hoped that Nat DeLeon and Alan Herndon would be able to speak at our February meeting; unfortunately this was not possible. Instead, the explanation of the clone preservation project as authored by Nat and Alan is re-printed here.

Bromeliad Clone Preservation Project By Nat DeLeon and Alan Herndon

It has been nearly 60 years since the Bromeliad Society International (BSI) was formed and almost 50 years since the Bromeliad Society of South Florida (BSSF) was organized as an affiliate of the BSI. During this period, bromeliads have gone from being hard-to-find plants of interest to only a small cadre of highly motivated (some might say obsessed) collectors to a mainstream crop easily available to every American in local stores.

Along with the shift from collectible to commodity, large numbers of species were imported and huge numbers of hybrids were created to meet the demands of the mass market. As newer hybrids took over an ever larger share of the market, older clones began to disappear from sight. Many examples can be cited by people growing bromeliads 30-40 years ago. For example, I no longer have any idea where to find *Aechmea fulgens discolor* 'Magnificent', if it still exists. Nor have I seen *Aechmea pineliana minuta* in recent years. The small form of *Aechmea tillandsioides*, that was commonly grown in southern Florida 30 years ago, now seems to be represented only by the albomarginate clone.



Aechmea tillandsioides

Note that the term clone is used both to describe genetically distinct collections of species and different hybrids. In general, a clone represents a group of genetically identical plants. These clones are commonly produced by asexual reproduction (i.e., not grown from seed). Each collection of a species in the wild almost always represents a genetically distinct clone. In the same way, virtually every seedling produced by crossing distinct clones of a single species (*Aechmea chantinii* is a good example) represents the start of a new distinct clone. In practice, we are not going to genotype plants, we will only recognize clones where the genetic difference manifests itself in the appearance of the plant. The same considerations



Aechmea pineliana
minuta

apply to hybrid clones. We are only concerned with clones that differ in appearance.

Some of the old clones have undoubtedly disappeared, but bromeliads are a remarkably hardy group of plants, and many of the older plants may still exist in the odd corners of small (or large) collections. As time passes, identification of these clones becomes harder as labels are lost in the normal course of events and memories fade.



Aechmea chantinii

There is also a slow but steady loss of plants in even the best maintained collections. Natural disasters (windstorms and floods, in particular) can lead to catastrophic losses in both plants and the labels attached to the plants. However, the most serious risk of wholesale loss in older collections occur when the owners die, move or become too ill to care for their plants.

In some cases, it is important to have these older clones in hand. For instance, I have not found plants comparable to the plants we used to call *Neoregelia ampullacea ampullacea* and *Neoregelia ampullacea tigrina*. Without the plants, I cannot even guess how they relate to the *Neoregelia ampullacea* complex

as understood today.

We propose a project to preserve these old bromeliad clones. The project will focus on providing information on what clones are available and who is growing them. Specific goals include developing a database of the different bromeliad clones in cultivation, create a list of individuals growing each clone, and provide a framework for trading and selling these clones among interested growers. Clones most in danger of being lost in cultivation will be identified in the database.

The database will ultimately include all identifiable bromeliad clones, old or new. Clones will be identified by comparison to old photos and descriptions whenever possible. Older growers, such as Nat Deleon, will also be pressed into service to help with the identification of these plants. The initial priority will be identification of older clones, since these are most likely to have dwindled in cultivation.

Local Bromeliad Societies will play a crucial role in this project. Many desirable clones are probably waiting to be found in older collections where labels have been mixed and lost over the years. Knowledgeable local society members will be needed to ferret out these plants and establish their true identities. Local societies will also need to keep track of the

individual growers in the database so all interested persons can be notified when a collection rich in desirable older clones is about to be dispersed. Finally, local Bromeliad Societies could help preserve the more important clones by including them in their plant distribution programs.

The general database should be open to all interested parties. Small commercial growers who would be willing to grow a clone that sells five to ten plants a year might find the database provides the necessary market. Collectors might find the database provides a way to exchange duplicates for money or other plants.

There should also be a membership network of people most interested in growing these plants. The primary aim is to have each clone established in more than one collection to guard against loss. Membership would be open to anyone willing to follow a few rules. Members would have to follow strict guidelines for labeling plants and ensuring labels are not lost. The central database would include a unique identifier for each clone that could be used in



Neoregelia ampullacea

Photo from FCBS.org

Photo by Derek Butcher



Neoregelia ampullacea 'Tigrina'

labeling so individual growers would not have to maintain the complete record associated with the clone. All members would agree to provide a minimum number of free offsets (perhaps 5) yearly for the benefit of the project (other offsets may be traded or sold for the benefit of the member). Finally, in the event of a natural disaster befalling one member, other members would be expected to help restock the collection of the affected member. Benefits to members would include a ready source of information on all clones in the database and a directory of potential sources for desired plants. Members would also receive advance notice when another members collection (or a significant part thereof) becomes available. Finally, members could expect assistance in recovering their collections from disasters.

(Editor Note: The original document concluded with “Specific Actions for BSSF” with a list of members with collections reaching back into the 1970’s. Obviously this specific job could be applied to another region, e.g. Lee County. Once this list was established, Nat and Alan recommend the following actions-)

Develop inventory for the older collections through site visits.

Establish identity of plants, including chain of custody, if possible.

Determine clones in most danger of being lost (i.e. those found in few collections)

Distribute clones through society channels (holiday party, raffle, door prize, auction)

Establish network of growers interested in preservation of important clones

Welcome to New Members

Dr Gary & B.J. Nelson

9299 Mooring Circle Fort Myers, Fl 33967 xxx-xxxx drghn@aol.com

Faye Hunt

1400 Pompei Ln #12 Naples Fl 34103 xxx-xxx-xxxx faeyh@aol.com

Liz Reo

10159 Boca Circle Naples, Fl 34109 EREOMSNCOM@MSN.COM

Read the Expanded Newsletter

I have been asking members who have e-mail, if they can start receiving the Meristem exclusively by e-mail and I have gotten a good response from the membership. I want to remind the members that even if they can not receive the e-mail version mainly because they have dial-up internet service, they can still go to www.fcbs.org and read the expanded Meristem directly online. This issue has-

Full color posters of upcoming events

Full rules and contact information for the upcoming Garden

Council Show at Edison College

Go to www.fcbs.org

FLOWER SHOW COMMITTEE

President:	Diane Raimy
General Chairmen:	Betty Mazzarella Mae Jean Nothstine
Advance Entries	Kay Holloway
Advisor:	Winnie Stone
Awards:	Pat Grulke
Graphics:	Diane Raimy

Horticulture

Chairman:	Brenda Norris
-----------	---------------

To Register Horticulture according to Exhibitor's last name, please call:

"A-I" call Joyce Cottingham

Email: JoybeeC@hotmail.com or call 573-0388

"J-Q" call Kathy Woodlock Email

KathyW@earthlink.com or call 242-6303

"R-Z" call Beverly Zorn 432-0407

Classification and Placement: Peep Stevens and
Dorothy Campbell and Jean Shields

Design

Schedule: Pat Grulke, Winnie Stone,
Mae Jean Nothstine, Mitzi Marckesano,
Betty Mazzarella, Lois Gressman

Classifications	Winnie Stone
Hostess	Sylvia Lightbody
Judges Clerks	Suzy Valentine
Judges	Carole Mack
Publicity	Madeline Bohannon
Photography	Rita Moss
Preview Party	Mitzi Marckesano Ena McGrattan

Consultants:

Designer's Choice:	Beverly Ray
Novice Class:	Marty Ward
Penites:	Judy Gore
Tables:	Suzy Valentine
Tri-Color:	Ena McGrattan
Classification:	Winnie Stone

Properties and Staging: Harold and Lois Gressman,
Diane Raimy

Special Exhibits Chair:	Rachel Singletary
Treasurer:	Marty Ward
Vendors:	Sandy Kavouras



Fort Myers-Lee County Garden Council, Inc.
Presents



NEWSPAPER CAPERS

Extral Extral
Read All About It!

A Standard Flower Show

At

Edison State College

8099 College Parkway SW

Building S, Rooms 106-107

Fort Myers, Florida

Member of

National Garden Clubs, Inc.

Deep South Region

Florida Federation of Garden Clubs, Inc.

District IX

March 12, 2009 7 PM-9 PM

(Preview Party-Paid Admission)

March 13, 2009 9 AM-5 PM

FREE ADMISSION

GENERAL RULES

1. The schedule is the law of the show.
2. The Handbook for Flower Shows, 2007 edition and updates, shall be used as authority.
3. The National Garden Clubs, Inc. Standard System of Awarding will be used.
4. All horticulture and design entries must be pre-registered.
5. Neither the Fort Myers/Lee County Garden Council nor Edison College will be responsible for damage or loss of property.
6. All entries must be approved by the Classification Committees. Entries not conforming to the schedule requirements or not of show quality will be refused by the committee.
7. Entries will be accepted from 2:00 PM to 8:00 PM on Wednesday, March 11, 2009 and 9:00 AM to 11:00 AM on Thursday, March 12, 2009.
8. Judging will commence at 2:00 PM on Thursday, March 12, 2009.
9. All exhibits must be removed between 9:00 AM and 11:00 AM on Saturday, March 14, 2009.
10. Entry cards scoring 90+ must be so designated and must be signed.
11. The decision of the judges is final.

AWARDS

National Garden Clubs, Inc. Top Awards: 95 or above

Horticulture Division:

Award of Horticultural Excellence:

Green, Orange & Blue Ribbon

Arboreal Award: Two Values of Green Ribbon

5 Awards of Merit: Orange Ribbon

Collectors Showcase Award: Brown & Green Ribbon

Design Division:

Award of Design Excellence: Rosette of Gold Ribbons

Tri-Color Award: Blue, Red & Yellow Ribbon

Designer's Choice: Purple Ribbon

Prize Award: Blue & White Ribbon

Table Artistry Award: Burgundy Ribbon

Special Exhibits Division:

Educational Award: Brown & White Ribbon

Award of Appreciation: Orchid Ribbon

Blue Ribbon: 90 or above Red Ribbon: 85 or above
Yellow Ribbon: 80 or above White Ribbon: 75 or above

SCALES OF POINTS

Horticulture:

Cultural perfection-60

Condition and grooming-25

Distinction-10, Correct labeling-5

Horticulture Display:

Decorative effect-40

Cultural perfection-40

Staging-10

Correct, Suitable labeling-10

Design: All Designs and Exhibition Tables, Type II:

Conformance to schedule-20

Design-42

Artistic Concept-12

Expression-10

Distinction-16

Design: Functional Tables:

Conformance-20

Design-48

Artistic Concept-12

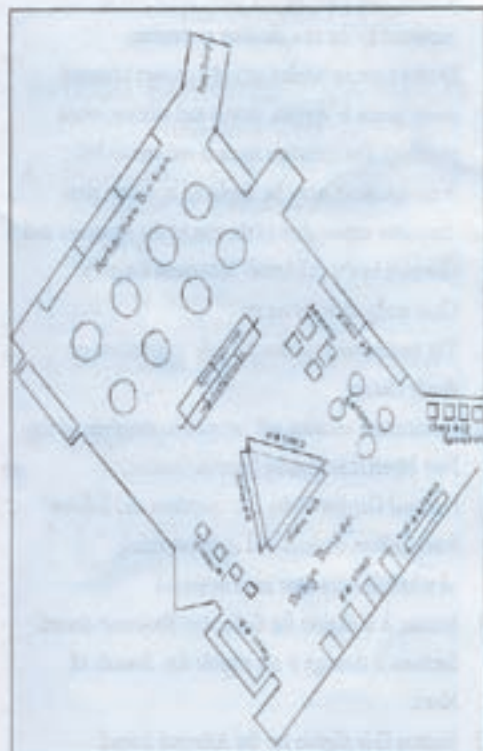
Expression-5, Distinction-15

Educational Exhibit:

Educational value-60

Staging-20

Creativity and Expression-20.



RULES

1. Entries must be grown by the exhibitor. Exhibits must have been in the exhibitor's possession for at least 90 days.
2. *Entries must be pre-registered according to Exhibitor's last name*
 "A-I" call Joyce Comingore 573-0388,
 "J-Q" call Kathy Woodlock 242-6303,
 "R-Z" call Beverly Zorn 432-0407.
3. Containers to be no more than 8 inches in diameter.
4. Double potting is permitted within the 8 inch limit. Only one specimen to a container. Natural multiplication from a single root system will be considered a single specimen.
5. More than one entry per class may be made by an exhibitor provided each is of a different cultivar, type, form or color.
6. All specimens must be clean and free of disease and insects. Any plant having these faults will be removed by the classification committee.
7. Entries must be labeled with the correct botanical name (genus & species, variety and cultivar, when possible). The common name is recommended.
8. A cut specimen must be displayed in a clear glass container appropriate to the size of the specimen and provided by the exhibitor. Maximum length 30". Clear wedging is permitted.
9. The committee reserves the right to combine or divide classes.
10. Horticulture sections will be open to members of the Fort Myers/Lee County Garden Council, National Garden Clubs, Inc. members and Edison State College students and staff, providing all schedule rules have been observed.
11. Section A is eligible for Collectors Showcase Award. Sections B through F are eligible for Awards of Merit.
12. Section G is eligible for the Arboreal Award.

Go Lifestyles

Each specimen must score 95 or more to qualify for the top award. Staged on a table: 30" high, space: 42" x 42".

Section A CLASSIFIEDS**Eligible for Collectors Showcase Award**

Collection: A group of five or more specimens of similar characteristics, all cut fresh plant material or all container grown representing a single genus, family, cultivar, or plants with like characteristics (i.e. succulents) each properly identified. Each cut specimen to be staged in a separate clear glass container, each container grown specimen in individual containers. Space allotted 20" w x 20" d on an underlay provided by the committee.

Class 1. Collection of cut plant material

Class 2. Collection of container grown plants

Class 3. **Display** Same as Collection but staged for artistic effect. Cut Plant material or container grown in either pots or on supports.

Section B. HEALTH AND FITNESS**Eligible for Award of Merit Container-grown Flowering Plants**

Class 4. Gomeriads

Class 5. Orchids

Class 6. Pelargonium (Geranium)

Class 7. Any Other

Section C. HOME SEEKER**Eligible for Award of Merit Cut Foliage Specimen One Stem**

Class 8. Coleus

Class 9. Philodendron

Class 10. Any Other

Section D. TASTE**Eligible for Award of Merit Edible/Culinary**

Class 11. Fruits Three or more specimens

Staged on a 9" plate or provided by the Committee

Class 12. Vegetables

Class 13. Herbs Cut specimen

Class 14. Any Other Staging same as above

Section E. TROPICALIA**Eligible for Award of Merit Container-grown Foliage Plants**

Class 15. Ferns

Class 16. Bromeliads

Class 17. Cacti & Succulents

Class 18. Any Other

Section F. HOME & GARDEN**Eligible for Award of Merit Cut Flowering Specimen One stem**

Class 19. Tagetes (Marigold)

Class 20. Pelargonium (Geranium)

Class 21. Heliconia

Class 22. Any Other

Section G. REAL ESTATE

Eligible for Arboreal Award One stem 12" to 30" with nodes

- Class 23. Foliage Shrub
- Class 24. Flowering/Fruiting Shrub
- Class 25. Foliage Tree
- Class 26. Flowering/Fruiting Tree

DESIGN: DIVISION II RULES

1. Design Classes are limited to four entries. Exhibitors may enter only one exhibit in each class, but may enter as many classes as desired.
2. Entries must be pre-registered with Kay Holloway.
Email: hollowaykayh@aol.com 850-1338
3. Designs must be the work of the exhibitor.
4. All designs must contain some plant material.
5. The following ARE NOT permitted: Artificial plant material; the treating of fresh plant materials in any manner; cut fruit/vegetables or prepared foods; natural bird's nests; butterflies or other insects, fish, birds, or animals; landscapes or scenes; national flag.
6. The following ARE permitted: Treated or dried plant materials; cut/dried flowers and/or plant forms constructed of recognizable plant materials; native plants grown by the exhibitor or obtained in a legal manner; or decorative wood; accessories; backgrounds, and/or draping, underlay, overlay and bases.
7. Plant material must be neatly and correctly named on a plain 3" x 5" card, provided by the committee. A brief explanation of the design may be included.
8. Judges are requested to provide comments on all exhibits except those awarded blue ribbons.

DESIGN: DIVISION II *The News Press*

Section A. LOCAL AND STATE

Eligible for Designer's Choice Award

- Class 1. Sports Viewed all round on a pedestal
24" w x 24" d x 40" h
- Class 2. Around Southwest Florida
A hanging design staged in a frame provided by the committee. Frame size 20" w x 36" h
- Class 3. Arts and Entertainment
Table 30" high, Spaces 42" wide x 42" deep
Backgrounds optional

Section B. COMIC PAGE

Eligible for Petite Award Niche provided by the committee

- Class 4. Peanuts Not to exceed 5"
Designer's choice of material
- Class 5. Horoscope Not to exceed 8"
All dried plant material
- Class 6. Games People Play Not to exceed 8"
All fresh plant material

Section C. GULF COASTING

Eligible for Table Artistry Award

- Class 7. Weekend Life Exhibition Type II
Staged on a Table 30" high
Space 30" high x 30" wide
- Class 8. Welcome Break Functional TV Tray
- Class 9. Grandeur
Functional Cocktails for two
Staged on a table 24" round x 40" high
Exhibitor to provide cloth

Section D. TRAVEL AND LEASURE

Eligible for Tri-Color Award

Staged on a table 30" high, 30" w x 30" d

- Class 10. Cityscapes Mono-Botanic Design
- Class 11. Going Green All Foliage
Background optional
- Class 12. Tropical Retreat Stretch Design

Section E. BOOKS Novice Class

- Class 13. Dear Abby
A Design staged on a pedestal
24" square x 40" high

Invitational Design in North Lobby:
Ena McGrattan

SPECIAL EXHIBITS: DIVISION III FAMILY TIES

A. Educational

Eligible for Educational Award

18 square feet of exhibiting space.

Staged on a table 30" high Space: 42" x 42"

1. Teleview An exhibit of Tropical Fruit
2. Today An exhibit of Native Plants
3. Newsmakers An exhibit from Edison/Ford Estates

B. Invitational

Eligible for Award of Appreciation

4. ECHO
5. Florida Yards and Neighborhoods
6. Frogs in the Garden

GARDEN GALA

Pine Island Garden Club

Saturday February 21, 2009 9-4

Pine
Island
Nature
Park
1 block
North of
the
center

**SEE
YOU
THERE**



FREE ADMISSION - FREE PARKING

FREE SEMINARS

NATIVE AND EXOTIC PLANTS

FOR SALE

GARDEN ADVICE

HANDICRAFTS-RAFFLES

GARDENING BOOKS-BAKED GOODS

WHITE ELEPHANTS-GARDENING DEMOS

**Proceeds benefit academic scholarship fund
Maintenance of Museum of the Islands gardens
Maintenance of Pine Island Nature Park**



Tropical Plant Bazaar at Four Mile Cove / Eco Preserve



Tropical Plant Bazaar will be here in this area

March 7, 2009

9:00am - 2:00pm

A semi-annual event!

You never know what you might find...
palms, orchids, fruit trees, heliconias,
bamboo, ginger, hibiscus, bromeliads...

Come early for best selection!



For details call the park office (239) 549-4606

CBS November Meeting Minutes

Due to illness, our acting Secretary at the January meeting is unable to provide minutes for the meeting. some of the highlights included-

New members included: Gary and BJ Nelson, Faye Hunt and Liz Reo.

Our show and sale will be Friday, December 4th through Sunday, December 6th 2009. Brian Weber will be the chairman. David Prall, Co-Chair.

We are accepting names and themes for our 2009 sale and show at this meeting. Contact Larry Giroux.

Ross Griffith has volunteered to be Show Chairman with Betty Ann Prevatt as Co-Chair.

We're still looking for a new facility to have our meetings, show and sales. Steve Hoppin has again volunteered to look into this. If you have any suggestions please contact Steve. Larry Giroux looked into the Grace Church Community Center. Since our meetings are on Sundays, they will not be able to rent to us.

At the Florida Council of Bromeliad Societies' quarterly meeting in January at the Giroux/Hoppin home, Ron Cave who is in charge of the release of the parasitic weevil fly, has agreed to a release here in Lee County. Anyone who knows of an eligible release site please contact Larry Giroux to pass on that information.

A board meeting was held on January 14. We discussed the finances of the CBS. We discussed ways of increasing income and reducing our overhead. Recommended donations for 2009 will include the B IC - \$ 400, the BSI - \$400, the CS - \$400, 7 Miles Slough membership - \$100. For this year ½ of the revenues from the Evil Weevil Auction will be donated to the FCBS. The membership sales fee will increase back to 25 %. The copy of the income and expenses statement for the 2008 Bromeliad sale was available at the meeting as well as the CBS 2008 expense statement. Copies of the financial statements of CBS are available to members from Betty Ann Prevatt. Larry Giroux made a motion to accept the recommended donations of the board. This passed unanimously.

Vicky Chirnside, the FCBS representative, discussed the FCBS quarterly meeting. The Bromeliad Extravaganza will be held at the Renaissance Orlando Hotel Airport in Orlando Florida, November 13 – 15th. Rooms will be available at a discount rate of \$109 per night. The registration fee, which will include the banquet will be about \$55.00. There will be the usual sales, tours, seminars and rare plant auction. Nat DeLeon and Alan Herndon are proposing a Bromeliad Clone Preservation Project. You'll be hearing a lot more about this in the upcoming months. Ron Cave gave an update of the Bromeliad Weevil Project.

January workshop – Steve Hoppin with the assistance of the membership gave a program on “Bromeliad Garden Supplies and Equipment”.

Announcements- Orchid Show and Sale Jan 23-25th at The Clariten Hotel, Cleveland Avenue, Fort Myers. The Pine Island Gala, 60 Venders, Saturday February 21st, contact Donna Schneider for more information. Thursday, February 12th at 10AM, Dennis Cathcart will be speaking at the Elks Club on Radio Road in Naples, for more information contact Carol Sweat.

January program –Harry Luther presented a program on the “Bromeliads and Habitats of Brazil”.

Show and Tell was conducted by Dale Kammerlohr.

Plant raffle was conducted by Larry Giroux, assisted by Dolly Dalton, Jeff Joffe and Ross Griffith.

Submitted by Larry Giroux, CBS Editor

Calendar of Bromeliad Events

April 4, 5, 2009

Bromeliad Society of Broward County's Annual Show and Sale at the Plantations Women's Club, Fort Lauderdale, Florida. Judged Show Friday April 3rd, Show and Sale open to public April 4-5th – more details to follow as available.

April 17-19, 2009

Bromeliad Society of South Florida will host their Show and Sale at Fairchild Gardens in Miami, Florida. Judged Show on April 17th with Show and Sale April 18-19. Auction at Noon April 18th.

April 19, 2009

The 29th CBS Birthday Party

April 25 - 26, 2009

Annual Sarasota Bromeliad Society Show and Sale- Marie Selby Botanical Gardens, Sarasota, Florida-April 25 (10 AM-5 PM), April 26 (10 AM - 4 PM) Plant sales will also be held April 24 (10 AM - 5 PM).

May 2-3, 2009

Greater New Orleans Show and Sale

November 13-15, 2009

The FCBS Bromeliad Extravaganza, hosted by the Bromeliad Society of Central Florida, will be held at the Renaissance Orlando Hotel Airport in Orlando Florida, Sales, Seminars, Tours, Banquet and Rare Plant Auction. Information to follow.

December 4-6, 2009

The Caloosahatchee Bromeliad Society's Show and Sale, Terry Park, Fort Myers, Florida. Judged Show on Friday with Show and Sale open to the public Saturday Dec 5th- 9AM-5PM and Sunday 10AM-4PM.

December 20, 2009

The CBS Holiday Party

July 26-August 1, 2010

The BSI World Bromeliad Conference - Bromeliads in the Big Easy (Astor Crowne Plaza - New Orleans). "Catch the Fun".



Caloosahatchee Bromeliad Society
3836 Hidden Acres Circle N
North Fort Myers, FL 33903
E-mail - DrLarry@comcast.net



Our February Speaker is

John Banta

“Those Were the Days”

*There are still many members who owe their
2009 dues. Please send your money to
Betty Ann Prevatt , Thanks.*

*Check out all the events coming up and
plan on attending some of them.*

*If you are interested in entering the
Garden Council Show in March, Rules
and Schedule are printed in this issue.*