



January 2007

**CALOOSAHATCHEE
BROMELIAD
SOCIETYs
CALOOSAHATCHEE
MERISTEM**

3836 Hidden Acres Circle N
North Fort Myers FL 33903
(239) 997-2237

DrLarry@COMCAST.NET



Jim Bixler has been sending me a series of pictures as his yard comes alive with color from the blooming of some of his aechmeas. This month's Bromeliad Expose will cover some of the patterned aechmeas. Pictured here is *Aechmea* 'Bert' demonstrating one of its traits of climbing up any surface it's attached to. To see other color photos of Jim's yard please see the special expanded color version of this issue at www.fcbs.org. Photo by Jim Bixler.

CALOOSAHATCHEE BROMELIAD SOCIETY OFFICERS

EXECUTIVE COMMITTEE

PRESIDENT Steve Hoppin (HoppinSL@juno.com)
VICE-PRESIDENT Tom Foley (tefoley24@earthlink.net)
SECRETARY Chuck Ray (fishbig1@earthlink.net)
TREASURER Betty Ann Prevatt (bprevattpcc@aol.com)
PAST-PRESIDENT Dianne Molnar (capebrom@aol.com)

STANDING COMMITTEES CHAIRPERSONS

NEWSLETTER EDITOR Larry Giroux (DrLarry@comcast.net)
FALL SHOW CHAIR To be announced
FALL SALES CHAIR To be announced
FALL S&S Co-CHAIRS To be announced
PROGRAM CHAIRPERSONS Debbie Booker/Tom Foley
(tefoley24@earthlink.net)
WORKSHOP CHAIRPERSON Eleanor Kinzie
SPECIAL PROJECTS Deb Booker/Tom Foley
Senior CBS FCBS Rep. Vicky Chirnside (vickychirn@aol.com)
Co-Junior CBS FCBS Reps. Debbie Booker & Tom Foley
Alternate CBS FCBS Rep. Dale Kammerlohr (tropdsk@strato.net)

OTHER COMMITTEES

Appointments to these Committees are pending for 2007

AUDIO/VISUAL SETUP Tom Foley (tefoley24@earthlink.net);
BobLura
DOOR PRIZE Barbara Johnson (lion56@aol.com)
HOSPITALITY Mary McKenzie (manytoes@aol.com);
Martha Wolfe
SPECIAL HOSPITALITY Betsy Burdette (betsy@burdetteinc.com)
RAFFLE TICKETS Greeter/Membership table volunteers - Luli Westra,
Dolly Dalton, Eleanor Kinzie, etc.
RAFFLE COMMENTARY Larry Giroux
GREETERS/ATTENDENCE Betty Ann Prevatt, Dolly Dalton(dollyd@comcast.net),
Luli Westra
SHOW & TELL Dale Kammerlohr
FM-LEE GARDEN COUNCIL Mary McKenzie
LIBRARIAN Sue Gordon
ASSISTANT LIBRARIAN Kay Janssen

The opinions expressed in the Meristem are those of the authors. They do not necessarily represent the views of the Editor or the official policy of CBS. Permission to reprint is granted with acknowledgement. Original art work remains the property of the artist and special permission may be needed for reproduction.



THE CALOOSAHATCHEE BROMELIAD SOCIETY

MEETING TIME AND PLACE:

January Meeting: SUNDAY January 21st, 2007

ST. JOHN the APOSTLE CHURCH 3049 McGREGOR Ave. FT. MYERS.
DOORS WILL BE OPEN AT 12:30 FOR SETUP.

MEMBERSHIP SALES ARE ENCOURAGED
AT THE JANUARY MEETING.

(If you would like to sell plants at the meetings, please confirm the rules with Betty Ann Prevatt. This is a great way of getting rid of your excess and picking up new plants.)

*Friendship Plants, Raffle Plants and Extra Door Prizes
are always welcome and appreciated.*

January Program

(Starting following the refreshment break)

“The Bromeliad Events of 2006”

By Dr. Larry Giroux

A wise man once said (probably many more times than that) “It is best to look back to see where you’ve been before you move to where you’re going.” For those who were there, for those who wanted to be there and for those who don’t know what they missed, you Editor will take a pictorial tramp down memory lane and recall some of the bromeliad related events of 2006. Although I obviously wasn’t at every bromeliad event of 2006, as time allows I hope to promote interest and encourage members to attend similar future events when the opportunities offer themselves by recapping some of my own as well as other CBS members’ experiences in 2006.

January Workshop

(Starting at 1:15PM)

“Your Plant has Scale!!!”

“The Winter Blooming Aechmeas”

By Betty Ann Prevatt and Steve Hoppin

Confusion about the spots on your plants still exists. Scale does not have to be the cause of the end of your exhibiting and selling career. Betty Ann will discuss the problem and solution. In addition we couldn’t let all the blooming aechmeas go unnoticed. Steve with the assistance of Betty Ann will take a closer look at the cultivars of *Ae. orlandiana* and other Winter blooming aechmeas.

The Caloosahatchee Bromeliad Society is an active Affililate of:



FM-LCGC



Cryptanthus
Society



Bromeliad Society
International



FCBS

SOCIETY NOTES

Pay Your Dues and Become Involved

As of the end of December, only about half of our members have renewed their membership. Procrastination is one of my traits too, but not one I'm proud of. Please pay up your membership dues either by mail or in person at the January meeting with Betty Ann Prevatt. (New members who joined in November or December of 2006 are good until 2008) Membership has its privileges and you don't want to lose them. Unfortunately there are also some obligations, which go along with belonging to the CBS.

I hear all the time about how great our Society is; not only in numbers, but in the participation of our membership within our own Society as well contributions to other organizations and our community. We need to uphold this tradition so I encourage all members to give back to the CBS in anyway you can. Attend meetings, become a Chairperson or committee member; write something or submit pictures to the Newsletter; donate plants for raffles, auctions, door prize or the "friendship table"; participate at workshops from either side of the table; sell at sales and enter our shows; give a Program for our Society or other garden groups; and buy from and trade with other members. You are a member of one of greatest bromeliad families in the World - the Caloosahatchee Bromeliad Society.

New Members

Please add these New Members' information to your Roster. New Members, please see me (Larry Giroux) at the next CBS event so I can get your pictures for the 2007 Roster. Thanks.

Mr. Mike Gimeno
4504 N. Lincoln Ave.
Tampa, Fl 33614
XXX-XXX-XXXX

Ms. Susan Ilardo
5999 Park Road
Fort Myers, Fl 33908
XXX-XXX-XXXX
DougSue112000@davispc.com

Mr. Brandon Reich
Mr. Carlos Alvarez
2510 SW 25th Ave.
Cape Coral, Fl 33914
XXX-XXX-XXXX
sobegura@aol.com

Ms. Deborah Jalbert
425 15th ST. NW
Naples, Fl 34120
XXX-XXX-XXXX
keysey@earthlink.net

2007 Photographic Roster and Yearbook

At the March meeting members are given a special gift of a full color Membership Roster and Yearbook containing the contact information for our active members as well as pertinent information about our Society. Over the last several years I have accumulated the pictures of our members. They may not all be “glamour shots”, but they really help us to know and recognize our members. Each year I encourage new members to see me if I don’t catch you first, to get your picture. I also offer our established members an opportunity to have their pictures updated, for example after your “face lift” or weight loss program. So please find me at the meeting as soon as possible in order so I can add you to our “family album”.

Check at the Hospitality Desk at the next meeting and review your information in the 2006 Roster and Yearbook and confirm its accuracy. I always appreciate when people make my jobs easier.

- Thanks from Your Editor

The 2006 Holiday Party

After talking to your friends who attended the 2006 Holiday Party, I’m sure you are kicking yourself in the pants for not attending.

As usual the weather gods blessed us with perfect weather in which to enjoy the exquisite grounds of Betsy and Bill Burdette’s home. Members took advantage of the creek to go canoeing and of the lushly planted trees and grounds to enjoy the variety of tropical and semi-tropical plants. The food, the raffle plants and the company made for a great getaway from the Holiday stresses.

Thanks to our hosts Bill and Betsy Burdette for again giving of themselves and their home for our enjoyment.



Pictured here are a few of the Holiday Party guests - Steve Hoppin, Donna Schneider, Diane Wilson and Luli & Dave Westra, who found time between eating, drinking and being merry, to pose for the camera. Photo by L.

Again this year Bill and Betsy Burdette took time from their own holiday schedule to host the CBS Holiday Party at their Orange River home. Betsy is holding one of the several prize baskets for our contest winners. Sue Gordon won both the best ornament and wreath categories, Donna Schneider won with her beautiful table top arrangement, while Larry Giroux took the prize for the best tree topper.



(Dyckia) **‘Naked Lady’ Found in Shadehouse!!!**

You won’t read about Tom Cruise or Anna Nicole Smith in the BSI or CS Journals, but you will be entertained by stories about the jungles of Central America, see colorful pictures of new bromeliad hybrids as well as lots more interesting and valuable information.

For first time subscribers, you can get 1 year of each Journal for \$25. Sure after that if you want to continue subscribing, it will cost you less than \$1 per week to support the two International organizations spreading information about your hobby.

See Betty Ann Prevatt at the next meeting or give her a call and join this month. You can always hear the gossip about Madonna from the “tube” for free.

Remember you can see a special edition of this issue with added photographs in full color at www.fcbs.org!

Bromeliad Expose by Larry Giroux

One of the more attractive sights in the Florida landscape is a tree, most often a Palmetto palm, covered by climbing *Aechmea* 'Bert's, especially during the winter, when they are in full bloom. From the time it begins to poke its inflorescence head above the silvery-green, purplish barred leaves, until its yellow flowers show from between the bright orange-red brackets of the inflorescence, it is performing a show to be enjoyed and one that continues for weeks.

Gardeners have been savoring this experience since Mulford B. Foster made the cross of *Aechmea orlandiana* and *Aechmea fosteriana* (two aechmeas, which he personally discovered in central Brazil in the late 1930's). This hybrid was made about 1945 and named for his young son, Bert Foster.

Aechmea 'Bert' is an example of where the total is greater than the sums of its portions. It tolerates the extremes of light, it does not shy away from cooler temperatures, is not skimpy with its pups, and proudly scales tall heights to better display its beauty.

But I am getting ahead of myself. Before there could be *Ae.* 'Bert's, there were the patterned aechmeas species - *Aechmea fosteriana*, and *Aechmea orlandiana*.

From the descriptive data published by Lyman Smith, both of these aechmeas were discovered in common areas about the same time on two separate occasions. Mulford B. Foster records that on July 7th 1939 in the state of the Espirito Santo, Brazil and on July 11th 1939, in the same state, he discovered *Aechmea orlandiana* and *Aechmea fosteriana*, respectively. On a return trip to Espirito Santo in August of 1940 he rediscovered these two aechmeas. He further reported that he found both species growing as epiphytes and as terrestrials. Although both *Aechmea fosteriana* and *Aechmea orlandiana* were noted growing in shade in the forest along the coast, *Aechmea fosteriana* was more commonly seen growing by the sea as a terrestrial.

It was in 1941 that Lyman Smith published the formal descriptions of these two plants. He named *Aechmea fosteriana* for its discover, Mulford B. Foster and named *Aechmea orlandiana* for

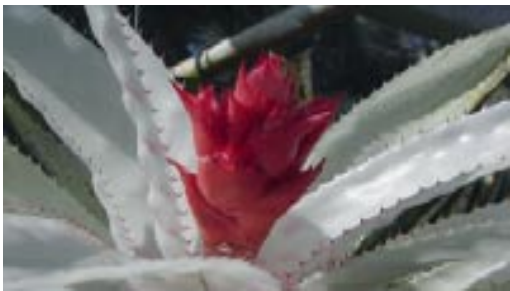


The appearance of the species *Ae. orlandiana* is as variable as the different cultural conditions it is given. Here is pictured an example of *Ae. orlandiana* grown “hard” in bright light, with no added fertilizer and under drier conditions. The dark barring dominates, leaving less of the background green color. Also, the characteristic skirt is now composed of dried older leaves. Obviously not a show plant, but still appearing healthy and growing well under these extreme conditions.

Ae. orlandiana grown under lower light, with good hydration and foliar feedings also looks healthy, but has lost all its red blotches and there is dramatically less contrast between its markings and the base green color.



To the left is *Ae. 'Ensign'*, the predominately albo-marginated cultivar of *Ae. orlandiana*. For comparison, to the right is a variegated *Ae. orlandiana*, which has retained the name *Ae. 'Reverse Ensign'*. Below is an albino offset of *Ae. 'Ensign'*, which was left attached to the mother plant and went on subsequently to bloom. Detached, this plant would have died due to lack of the green chlorophyll necessary for nutritional support.

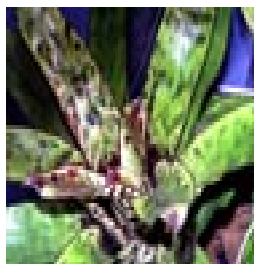


Ae. 'Ensign' first appeared in a tray of *Ae. orlandiana* seedling in the greenhouse of E.W. Ensign of Orlando, Florida in 1960. From seed it took 6 years to bloom. Vegetative offsets are the only means of reproduction since albino seedlings will not live. In the early '80s, Bert

Foster, Mulford Foster's son, discovered and propagated a clone of *Ae. 'Reverse Ensign'* from a vegetative offset of *Ae. 'Ensign'*. Ironically, Ervin Wurthmann of Tampa, Florida around the same time discovered a variegated seedling from a batch of *Ae. orlandiana* seedlings, and produced a second clone of *Ae. 'Reverse Ensign'*.



In 1959 with plants of *Ae.* ‘Bert’, *fosteriana* and *orlandiana* from Mulford Foster, William Frase of Orlando, made numerous crosses. Three seedling were especially outstanding and have been vegetatively propagated until now as (L) *Ae.* ‘Black Marble’, (R) *Ae.* ‘Pickaninny’ and *Ae.* ‘Shadow’ (not pictured). Unfortunately, although we know their gene pool,



the exact crosses producing these three plants are unknown. Our next plant is *Ae.* ‘Hayward’. This is a collected (by who is unknown) *Ae. orlandiana* acquired from Wyndham Hayward by Frase. Grown in high light, the leaves are splattered with dark, blood-red “ulcerations”, many fusing into streaky blotches. Next in line are *Ae.* ‘Medio Picta’ and *Ae.* ‘Jean Merkel’. There is a third cultivar called *Ae.* ‘Muelleri’ not pictured , which is similar to these other two. All three



have a thick brownish stripe down the center of the leaves. *Ae.* ‘Medio Picta’ appeared in 1980. Its center markings are moderately dense and become solid with high light. *Ae.* ‘Muelleri’ apparently looks similar, while *Ae.* ‘Jean Merkel’ introduced about 1990, has a wider center stripe, which turns more a reddish-brown color.



Three *Ae. orlandiana* cultivars with less dark banding include, (Above, L to R) *Ae. orlandiana* ‘Yellow’, *Ae.* ‘Snowflakes’, which is a cultivar of *Ae.* ‘Ensign’ from May Moir’s garden in Honolulu, Hawaii; (it has retained faint variegation) and *Ae.* ‘White Knight’, a cultivar of *Ae. orlandiana* with white banding and suffused in pink, introduced by Jim Irvin around 1996. Photos by Larry Giroux.

Mulford B. Foster's hometown, Orlando.

In my readings no mention was made by Foster of a natural hybrid of these two plants in spite of their proximity in nature. It wasn't until 1945 that *Aechmea* 'Bert' was introduced into cultivation by Foster.

Each of these species has its own commending characteristics. *Aechmea fosteriana* is a larger plant with fewer leaves making up its tight tubular rosette, which stands about 24 in. high. The leaves are a light green with a mottling and barring of a dull violet-purple color. The surface of the leaves are textured by undulation. Large green spines edge the leaves. The inflorescence, which is taller than that seen with *Aechmea orlandiana* tends to slightly lean. *Aechmea fosteriana*'s bracts are scarlet, but appear less prominent because the overall inflorescence is more lax than with *Ae. orlandiana*'s inflorescence. The petals are a dark yellow color.

Aechmea orlandiana differs by having a more lax rosette of leaves, which are only 12 to 18 in. long. It's lower drooping leaves produces this plant's characteristic "skirt". The leaves are a brighter green and have more shine than *Aechmea fosteriana*. Rather than a mottling or banding, the darker maroon to black markings produce zebra-like zigzags. The large spines are brown and when grown in good light, maroon blotches can be seen on the leaves. The inflorescence spike is composed of a compact cluster of salmon-scarlet bracts with pale yellow



Ae. orlandiana has been a favorite subject of artists. In 1996, it was the name given to the 1996 WBC held in Orlando. The BSCF uses this bromeliad as part of its logo and on our mailing cover, is reproduced a life like drawing of *Ae.* 'Pickaninny' created by CBS member, Kiti Wenzel.

or cream colored flower petals.

Their coastal Brazilian origins partially explain why these two species are temperamental about their growing conditions. Although *Aechmea* 'Bert' can be found growing outdoors north of Orlando, Florida, its parents require more protection from the cold and make much better greenhouse or indoor plants. Both species can tolerate bright light, but not as much as their offspring, *Aechmea* 'Bert'. My experience is that although *Ae. fosteriana* grows in cultivation equally as well as a terrestrial or epiphyte, *Ae. orlandiana* has a preference and does better when mounted. Over fertilizing, especially with *Ae. orlandiana*, is a mistake, which I have suffered through. Loss of the contrast of the bands may occur for generations if you are too generous with the food. An interesting trait with *Ae. orlandiana* is its tendency for its offsets to grow downward. When mounted this is not a problem; however, only when grown in the heaviest of pots, will a large plant stay standing. Fortunately, this trait was not inherited by *Aechmea* 'Bert'.

I must admit that personally the species *Aechmea fosteriana*, has not been of as much interest to me as has *Aechmea orlandiana* and its cultivars. I have included with this article, photographs of and commentary about some of the *Ae. orlandiana* cultivars, which we have added to our collection from friends and nurseries over the years.

Appreciation of the subtleties of the different varieties of the patterned aechmeas has to be an acquired trait. Although many of these plants have distinct markings justifying them as distinct cultivars, due to the effect of cultural conditions, i.e. light, fertilizer, temperature, etc, I think it is necessary to see a specific plant at a certain time to distinguish it from any other *Ae. orlandiana* or *Ae. orlandiana* cultivars.

References

JBS. Volume XXXIV, No.4, Jul-Aug 1984, p170. *Aechmea* 'Pickaninny' and Its Family, William C. Frase.

The Bromeliad Society Bulletin. Volume XX, No.4, Jul-Aug 1970, p.96. *Aechmea orlandiana* var. Ensign by Ervin J. Wurthmann.

Bromeliads by Victoria Padilla. Crown Publishers, Inc., New York, N.Y. 1973.

Flora Neotropica – Bromelioideae by L.B.Smith and R.J.Downs. New York Botanical Gardens, New York, N.Y. 1979.

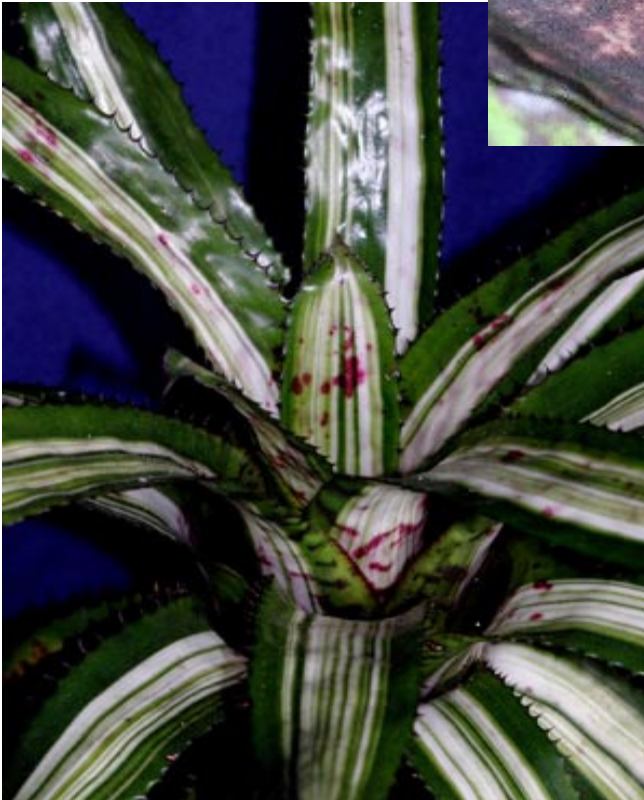
The Bromeliad Cultivar Registry compiled by Don Beadle. BSI, 1998.

Online additional pages



**Unregistered hybrid -
Ae. 'Burning Embers'**

The shape and coloration of the leaves suggest *Ae.* 'Bert' in its parentage; the inflorescence suggests *Ae. orlandiana* as well.



**Enlargement
of *Ae.* 'Reverse
Ensign'**
demonstrating
the textured
surface of
cultivars of
Ae. fosteriana
and *orlandiana*
created by
dippling and
undulation of
the surface.

*Aechmea
correia araujo*

is another patterned aechmea, which was not introduced into cultivation until 40 years after *Ae. orlandiana*, in 1980 by Roberto Burle-Marx. It appears quite content growing as an epiphyte either mounted or in a hanging basket. Like *Ae. orlandiana*, over feeding will result in loss of the characteristic contrasting pattern. The inflorescence is significantly different from *Ae. orlandiana*; it consists of a long narrow, pendulous spike with a compound panicle..



A cross of *Ae. 'Bert'* and *Ae. fosteriana* created by CBS member, Dale Kammerlohr. The inflorescence is intermediate between that of the two parents.





Aechmea fosteriana demonstrating its normal coloration and markings as well as its more lax inflorescence than that of *Ae. orlandiana*.



The photo above is a reproduction of a slide taken by Fred Ross of New Orleans, LA. The picture was probably taken at a Miami Show or WBC in the 1970s or '80s. It was labelled *Aechmea fosteriana* (variegated). Can anyone recall its history?

Additional pictures of Jim Bixler's patio and yard in Naples Florida.



Aechmea 'Blue Tango'



Neoregelia 'Bossa Nova'



Aechmea tayoensis

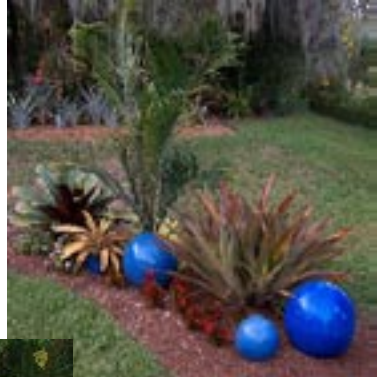


*Hohenbergia
correia araujo*



A grouping of *Ae.* 'Little Harv'

A planted "island" with several bromeliads adapted to full sun exposure.



This *Alcantarea imperialis* is growing poolside within a screened enclosure.



**Photos by Jim Bixler;
captions by L. Giroux**

The 2006 CBS SALE

You can get the statistics from Betty Ann Prevatt, our Treasurer., but the bottom line is that the membership of the CBS and especially the organizers, Chairpersons and volunteer workers of our 2006 Sale need to be praised for conducting the most profitable sale in CBS history. With 25% of gross sales going to the CBS Treasury, we can comfortably fund hall rental, newsletter publication, speaker fees, projects and outings planned for 2007 and most important of all, our 2007 Bromeliad Show and Sale.

One of the main reasons why we only have a Show on alternate years is the expense of such an undertaking. Profits from a non-show year have historically financed the significantly added expense of our Show. By having such a great sale this past year, we at least guarantee less anxiety about the financing of the 2007 Show.

Soon we will be starting the planning of our Sale and Show for this year. We have shown how well we can work together. I encourage those that were involved with the November sale to remain involved in the 2007 activities and I hope our newer members and those less active members will participate in the fun and excitement of a Show year. I guarantee you'll remember these times as some of best spent with CBS.

Personally, I was surprised by the availability and purchases of the number of cryptanthus at our sale. I hope it was due to the realization that the Caloosahatchee Bromeliad Society will be hosting the next International Cryptanthus Show. Hopefully, members are buying and raising cryptanthus for their entries in both Shows.

By the way, the last ICS was held in conjunction with the Sarasota Bromeliad Society's 2005 Show at Selby Gardens and besides the hundreds of entries in the SBS Show, there were over 100 separate additional exhibits in the judged cryptanthus show.

Hopefully with our numerous seasoned as well as new cryptanthus growers we will exceed that number.

Watch for more information about the CBS and CS Sale and Shows tentatively scheduled for Nov. 30th, Dec. 1st & 2nd, 2007 at Terry Park.

NOTICE TO ALL CBS MEMBERS

CBS President, Steve Hoppin, will be hosting the first

CBS Board Meeting of 2007 at his home-

3836 Hidden Acres Circle N.

North Fort Myers, Florida

Saturday, January 20th at 3PM

to discuss appointments and CBS business for 2007.

If non-Board CBS members have any concerns or wish input into 2007 CBS activities or events, at this time, please contact a Board member prior to this meeting for consideration by the Board.

Please call Steve at

239-997-2237 or **239-218-7378** or contact him at **steveandlarry@comcast.net** for additional information and directions.

We need a **NAME** for our Fall event!

Your 2007 CBS SHOW and SALE Chairpersons are seeking a **name** for our Fall event. We need a name. which will be suggestive of a **THEME**; a theme, which the organizers can incorporate into decorations, headtable, awards and advertisement. This name will be used for both the CBS and Cryptanthus Society Shows.

Two years ago the SBS and ICS was entitled -
“Alice in Bromeliadland”.

Please bring your ideas to the next meeting.

To All Our Members: Enjoy your hobby more

Join the Bromeliad Society International

for less than \$0.60 per week

Join the Cryptanthus Society

for less than \$0.40 per week

and as a first time subscriber the CBS will pay for

1/2 of the first year. So for \$0.50 per week you can get 2 great colorful

Journals and be part of the bigger picture.

See Betty Ann Prevatt for more information.

President's Message By Steve Hoppin

The last CBS meeting held in October 2006 included the election of Officers for 2007; plans were finalized for the big CBS Sale held in November; and a workshop focusing on genus identification as well as an excellent program detailing the diligent work of bromeliad and orchid hybridizer extraordinaire, Jim Irvin were presented by Larry Giroux.

As we departed our meeting the main topic of discussion was our November sale. As always, lot's of time, energy, and preparation was involved in the planning and instrumentation of our annual event. I'm very pleased to report that through great teamwork of the CBS membership and our talented bromeliad growers / vendors, the Society achieved an overwhelming successful sale. Betty Ann Prevatt will provide you with the full report at our next meeting.

The CBS Holiday Party was certainly enjoyed by all attending. Although pending rain threatened the outdoor event several times, the day cleared nicely and the grounds remained dry throughout. Once again our hosts Bill and Betsy Burdette provided us with a beautiful location on the Orange River, warm and sincere hospitality and a festive atmosphere. Many thanks go to our hosts and each of you who assisted to make this a memorable event.

To remain consistent with years past, Larry Giroux will present the first CBS program of the New Year featuring a look back at Bromeliad Events of 2006. Always creative and entertaining, Larry will share some familiar and not so familiar experiences as seen through the lens of his camera. Come and see who, what, and where made his list!

At this time I would like to thank the out-going CBS Board as well as welcome your new CBS Board of Directors. We would not be in the good shape we are today if it were not for our predecessors. Among the new Board are familiar faces and seasoned veterans returning to office and one new face, Mr. Chuck Ray of Naples, Florida. The Officers, Newsletter Editor, FCBS Reps and Standing Committee Chairs have either been elected by the membership or have volunteered to manage the day-to-day activities of the Society and serve the CBS membership by efficiently providing services and making events happen, which we can enjoy and learn from. I ask you all to help your Board and continue the same enthusiasm, which made 2006 such a successful year, into 2007. With us all working together we can guarantee another good and productive year for our Society.

In closing, let me remind you food items are always appreciated at break time, clean & healthy plants brought in for "Show and Tell" educate and inspire members; and that we always have room for one more bromeliphile ... so bring a friend or relative as a guest. I hope to see you all, if not more, at our first meeting of the New Year. Happy growing in the coming year, Steve

EVENTS CALENDER

April 13th, 14th & 15th, 2007 - Bromeliad Society of Broward County's Show and Sale. Lutheran Trinity Church Hall, Andrews Ave, Fort Lauderdale - Friday, April 13th with Sale Saturday, April 14th and Sunday April 15th. For additional information contact Ann Schandelnayer at 954-583-1124.

April 14th & 15th - Seminole Bromeliad and Tropical Plant Society's Spring Plant Sale. Sanford Garden Club Building, 200 Fairmont Drive, Sanford, Fl. 9AM-4PM both days. For information contact Miranda Maliborski at 407-830-0730 or at hankmal@earthlink.net.

April 20th, 21st & 22nd - Sarasota Bromeliad Society's Sale and Show. Judged Show on Friday April 20th with Sale Saturday, April 21st and Sunday April 22nd. Location to be announced. For additional information contact Terrie Bert at 941-795-6012 or at Theresa.Bert@MyFWC.com

April 20th, 21st & 22nd - Bromeliad Society of South Florida's Annual Show. Location to be announced. Additional information will be printed when available.

November 30th, December 1st & 2nd - The Caloosahatchee Bromeliad Society's 2007 Sale and Show. Judged Show - Friday, November 30th with Sale Saturday, December 1st and Sunday December 2nd. Terry Park, 3410 Palm Beach Blvd (SR80) Fort Myers, Fl. You can contact Steve Hoppin at steveandlarry@comcast.net or 239-997-2237 for preliminary information.

June 2008 - BSI World Conference in Cairns, Australia. Inquiries to Lynne Hudson 47 Boden Street, Edge Hill QLD 4870 or Linnie@Ledanet.com.au.



CALDOSAHATCHEE BROMELIAD SOCIETY
3836 HIDDEN ACRES CIRCLE N
NORTH FORT MYERS, FL 33903
E-MAIL - DLARRY@COMCAST.NET



***Aechmea* 'Pickaninny' By Kiti Wenzel**